



**JASON
REYNOLDS**



**ALISON
MACRINA**



**KEVIN
HENKES**



**BARBARA
LAWTON**



**DASHA KELLY
HAMILTON**



2022 WLA CONFERENCE

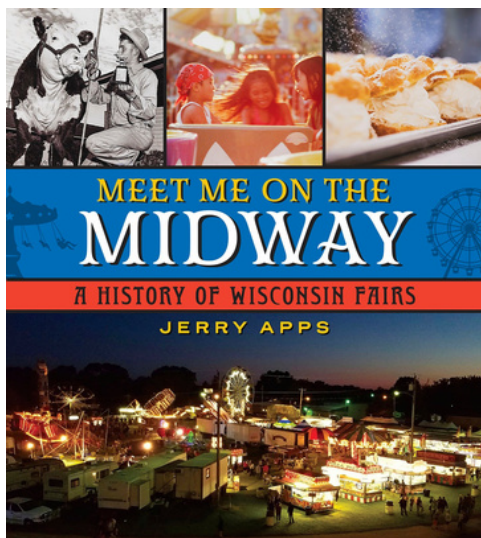
"Rising to the Challenge"

NOVEMBER 1-4, 2022

 **Grand Geneva Resort & Spa
Lake Geneva, WI**

**CLICK HERE FOR
CONFERENCE
WEBSITE**

— NEW for FALL

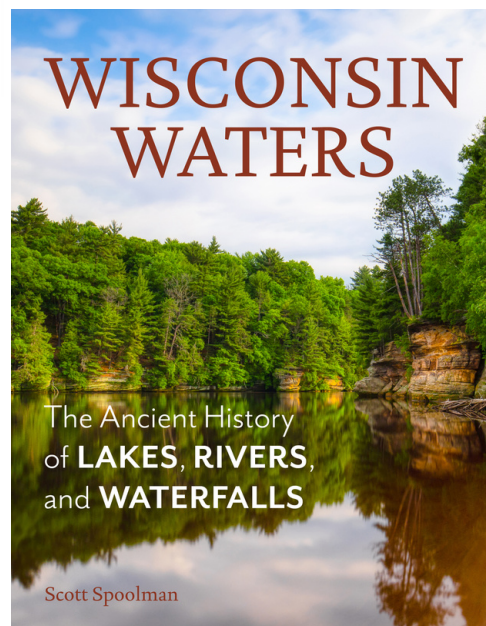


MEET ME ON THE MIDWAY

A History of Wisconsin Fairs

JERRY APPS

Paperback: \$26.95
9780870209833



WISCONSIN WATERS

The Ancient History
of **LAKES, RIVERS,**
and **WATERFALLS**

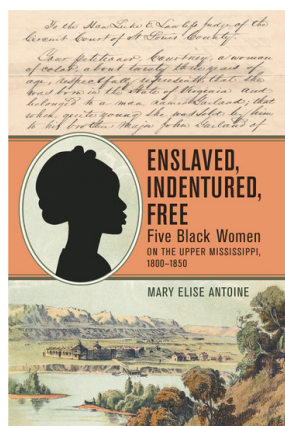
Scott Spoolman

WISCONSIN WATERS

The Ancient History of

Scott Spoolman

Paperback: \$26.95 / 9780870209949

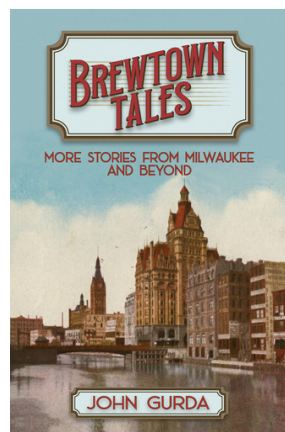


ENSLAVED, INDENTURED, FREE

Five Black Women on the Upper
Mississippi, 1800-1850

Mary Elise Antoine

Paperback:
\$24.95
9780870209895

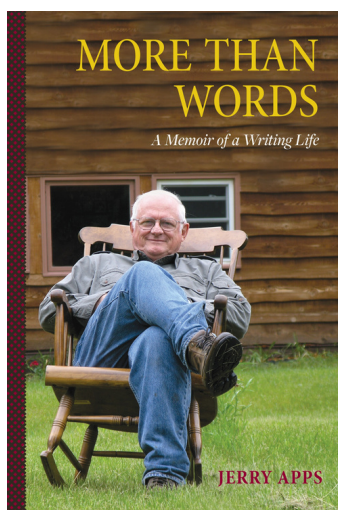


BREW TOWN TALES

A Memoir of a Writing Life

John Gurda

Paperback:
\$24.95
9780870209994



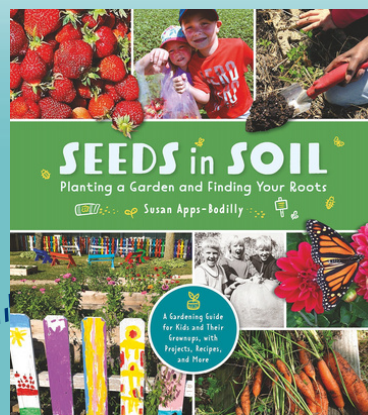
MORE THAN WORDS

A Memoir of a Writing Life

JERRY APPS

Paperback: \$24.95 / 9780870209970

— For Young Readers



SEEDS IN SOIL

Planting a Garden and Finding Your Roots

Susan Apps-Bodilly

Paperback: \$18.95 / 9780870209857

Now in Paperback!

FINDING FREEDOM: The Untold Story
of Joshua Glover, Freedom Seeker
\$20.00 / 9780870209550

LITTLE HAWK AND THE LONE WOLF
A Memoir
\$20.00 / 9781976600029

— TO —
ORDER

Call 800.621.2736 or visit wisconsinhistory.org/whspress
visit To view more titles, wisconsinhistory.org/whspress
visit



Wisconsin Historical Society
P R E S S



Welcome

Welcome to the Wisconsin Library Association's 2022 Annual Conference, where we will "Rise to the Challenge!" at the Grand Geneva Resort & Spa in Lake Geneva, WI. Over the course of three-and-a-half days, November 1-4, attendees will reconnect with colleagues, learn new things, and share stories about rising to challenges they have encountered during the last couple of years. The challenges of constantly pivoting to offer programs and services in new ways during the ongoing pandemic. The challenge of responding to disputes about books and displays. The challenge of being tired but still finding the energy and renewed passion to serve our communities. I can't wait to see you in the hallways, breakout sessions, and special events. The Conference Committee worked wonders this year and developed a lineup of wonderful breakout sessions and fabulous keynote and luncheon speakers.

Join us in the Exhibit Hall for the Opening Reception on Tuesday evening. While there, check out the WLA Foundation Silent Auction; proceeds support WLA Foundation initiatives such as scholarships, awards and honors, and the Wisconsin Library Heritage Center. Lake Geneva is considered the birthplace of Dungeons and Dragons, so we'll be hosting a D & D game session on Wednesday. If you're more of a trivia buff like me, join us for the WLA Foundation Trivia Night Fundraiser, also on Wednesday evening. On Thursday evening, we will honor this year's winners and honorees at the annual Awards & Honors Reception in the Chalet, a beautiful event space at the resort. Extra special this year, we will recognize WLA's Life Members with name badge ribbons. Please take a moment to congratulate these important members for achieving a 25-year membership in WLA.

Thank you all for your dedication to WLA and to libraries across Wisconsin!

Nyama Reed, WLA President
Whitefish Bay Public Library

Table of Contents

Conference Greetings.....	1	Featured Speakers.....	26
2022 WLA Board of Directors.....	2	Tuesday Program.....	29
Conference Information and Hours.....	3	Wednesday Program.....	29
Special Thanks.....	6	Thursday Program.....	35
Honoring Award Winners.....	7	Friday Program.....	41
Grand Geneva Conference Center Maps.....	8	WLA/WLAF Annual Meeting Agenda.....	45
Special Events.....	14	Conference Committee & WLA Staff.....	46
Exhibit Hall Floor Plan.....	17	Save the Date.....	47
Exhibitors.....	18	End-of-Year Review.....	48
Author & Presenter Fair.....	22		
Exhibit Categories.....	23		
Author Signings.....	24		

WLA Board of Directors



President
Nyama Reed
Whitefish Bay
Public Library



**Vice President/
President-Elect**
Kris Turner
UW-Madison
Law Library



Past President
Sherry Machones
Northern Waters
Library Service,
Ashland



Secretary
Desiree Bongers
Ripon Public
Library



Treasurer
Rachel Arndt
Rachel Arndt
Consulting, LLC
Milwaukee



**WLA Executive
Director**
Laura Sauser
Madison (ex-officio)

ALA Chapter Councilor
Kristina Gómez
Madison Public Library

**Association of Wisconsin
Special Librarians**
Carrie Doyle
UW-Madison Law Library

**Wisconsin Association of Academic
Librarians**
Cathryn Miller
Harper College, Palatine, IL

**Wisconsin Association of
Public Libraries**
Tracy Vreeke
Nicolet Federated Library
System, Green Bay

**Wisconsin Small
Libraries Section**
Gina Rae
Northern Waters Library Service,
Ashland

**Support Staff and Circulation
Services**
Jennifer Cook
Chippewa Valley Technical
College,
Eau Claire

Youth Services Section
Linda Jerome
La Crosse Public Library



**WISCONSIN
MATHEMATICS
COUNCIL, INC.**



SCAN ME

SUMMER MATH ADVENTURE

FUN MATH ACTIVITIES FOR FAMILIES
Experience wonder, joy and beauty of math all year long

Age appropriate activities:

- **PreKindergarten**
- **Kindergarten - Grade 2**
- **Grades 3-5**

**FREE for Wisconsin
Libraries**

www.wismath.org/summerinfo

Conference Information and Hours

REGISTRATION

Grand Ballroom Foyer

Tuesday: 2:00PM - 6:00PM

Wednesday: 7:00AM - 5:00PM

Thursday: 7:00AM - 4:00PM

Friday: *Button's Bay Boardroom*
Foyer 8:00AM - Noon

EXHIBITOR REGISTRATION

Tuesday: 11:00AM - 5:00PM

Exhibitor Registration at the Valley
Expo desk Grand Ballroom Foyer
2pm - 6pm Badge Pickup at
Registration table in Grand
Ballroom Foyer

ACTIVITIES IN EXHIBIT HALL

Grand Ballroom

Tuesday: 7:00pm - 9:00pm

(Opening Reception)

Wednesday: 7:00am - 5:00pm

Thursday: 7:00am - 4:00pm

TUESDAY

7:00PM - 9:00PM

Opening Reception
WLA Foundation Silent Auction
Exhibit Hall

WEDNESDAY

7:00AM - 5:00PM

WLA Foundation Silent Auction
Exhibit Hall

8:00PM - 11:00PM

WLA Foundation Fundraiser
Evergreen Room

THURSDAY

7:00AM - 3:30PM

WLA Foundation Silent Auction
Exhibit Hall

6:30PM - 8:00PM

Awards and Honors Reception
The Chalet

ATTENDEE MEALS AND BREAKS

Wednesday

7:00AM - 8:00AM Attendee Breakfast, Exhibit Areas

11:30AM - 1:00PM Attendee Lunch, Exhibit Areas

Those registered to attend the YSS Luncheon with Kevin Henkes -
Location: Maple Lawn B Lunch 11:30am - Presentation at 12pm

2:30PM - 3:00PM Refreshments Break, Exhibits Area

Thursday

7:00AM - 8:00AM Attendee Breakfast, Exhibit Areas

7:30AM - 9:00AM YSS Breakfast, Williams Bay Boardroom

11:30AM - 1:00PM Lunch, Exhibit Areas

Those registered to attend the Luncheon with Barbara Lawton -
Location: Maple Lawn C Lunch 11:30am - Presentation at 12pm

2:30PM - 3:00PM Refreshments Break, Exhibits Area

Friday

7:00AM - 8:30AM Continental Breakfast, Chophouse & Evolve Lounge

EXHIBITOR MEALS

Wednesday & Thursday

8:00AM Exhibitor Breakfast (those with meal plans), Chophouse

1:30PM Exhibitor Lunch (those with meal plans), Chophouse

ADDITIONAL MEAL INFO

Banquet group meals will not be available for purchase on-site. Anyone with a dietary restriction listed on their registration form should have received a ticket at registration with their dietary needs. If you did not - see the registration table.

Other meal options: You may enjoy planning a quieter meal away from the crowd at one of the many restaurants in the Lake Geneva area. There are casual and fine dining options located within minutes of the Grand Geneva Resort & Spa. For restaurant selections, please check the local arrangements table for area guidebooks and brochures.

FACILITIES

This year we are providing a lactation room and a gender-neutral bathroom for our attendees. These will be located in the Conference Center area.

Conference Information and Hours

TRANSPORTATION

The Resort Trolley pick up will always be located outside of the Main Entrance and Front Desk Area.

- **Wednesday and Thursday Morning Keynote Sessions:**

The Resort Shuttle will be available to transport attendees to and from the Forum for the morning Keynote Session. Pickup is at 7:45 AM.

- **Thursday Afternoon School for the Deaf Tour:** *(pre-registration required)*

For those that have signed up for transportation to the School for the Deaf in Delavan, the Resort Trolley will depart from outside the Main Entrance at 1:30 PM. The Resort Trolley will pick you up from the School for the Deaf at 4:00 PM and you will return to the Main Entrance at the Resort.

- **Thursday Evening Awards and Honors Reception:** *(pre-registration required)*

There is ample parking available at The Chalet. You may also take the Resort Trolley, which will begin transportation from the Main Entrance at 6:00 PM. The last return to the Main Entrance will be at 9:00 PM.

OTHER IMPORTANT INFORMATION

- Badges must be worn when attending conference programs, meetings, exhibits, and hospitality functions.
- Official WLA announcements and other messages will be posted in the Registration area and in the Whova App.
- Smoking is not permitted in the Grand Geneva Resort & Spa.
- The recording of programs, meetings, and meal functions by personal use of cameras or audio or video equipment is not permitted.
- The Wi-Fi network is "Grand Geneva" - No password should be required.

WLA ANNUAL CONFERENCE SAFETY PRECAUTIONS

[CDC.gov masking guidance](https://www.cdc.gov/masking/guidance) suggests that people may choose to mask at any time. People at high risk are likely to become very sick with Covid-19 and should wear a mask when and where community spread is possible. WLA supports the health and well-being of all conference attendees and highly recommends checking with your healthcare provider on whether you should wear a mask during the Annual Conference. To learn about the Geneva Resort & Spa's Health & Safety Response To COVID-19, visit [grandgeneva.com](https://www.grandgeneva.com).

The Wisconsin Library Association, along with the following association unit leadership, is pleased to present this slate of programs and special events. We hope you find educational sessions that are of interest and value. We also hope our special events provide opportunities to network with colleagues from around the state and beyond our borders.

WLA Divisions, Sections, Roundtables

Association of Special Librarians (ASWL)
Outreach Services Roundtable (OSRT)
Reference and Adult Services Section (RASS)
Support Staff and Circulation Services Section (SSCS)
Technical Services Section (TSS)
Wisconsin Association of Academic Librarians (WAAL)
Wisconsin Association of Public Libraries (WAPL)
Wisconsin Library Trustees & Friends (WLTF)
Wisconsin Small Libraries Section (WISL)
Youth Services Section (YSS)

WLA Committees

Awards and Honors Committee
Children's Book Awards Committee
Library Development & Legislation Committee
Literary Awards Committee
Scholarship Committee
Nominating Committee
Leadership Committee

WLA Special Interest Groups

Alumni
Government Information
Inclusive Services
Intellectual Freedom

WLA Code of Conduct

The Wisconsin Library Association (WLA) holds professional conferences and meetings to enable its members to receive continuing education, build professional networks, and discover new products and services for professional use. To provide all participants – members and other attendees, speakers, exhibitors, staff and volunteers – the opportunity to benefit from the event, WLA is committed to providing a harassment-free environment for everyone, regardless of gender, sexual orientation, gender identity, gender expression, disability, physical appearance, ethnicity, religion or other group identity.

As an association, WLA is strongly committed to diversity, equity and the free expression of ideas. Taken cumulatively, these values are based on our professional organization's (Wisconsin Library Association) firm belief in the value of civil discourse and the free exploration of competing ideas and concepts – with a fundamental respect for the rights, dignity and value of all persons.

Within the context of this WLA Code of Conduct and, more broadly, the freedom of expression, critical examination of beliefs and viewpoints does not, by itself, constitute hostile conduct or harassment. Similarly, use of sexual imagery or language in the context of a professional discussion might not constitute hostile conduct or harassment.

WLA seeks to provide a conference environment in which diverse participants may learn, network and enjoy the company of colleagues in an environment of mutual human respect. We recognize a shared responsibility to create and hold that environment for the benefit of all. *Some behaviors are, therefore, specifically prohibited:*

- Harassment or intimidation based on race, religion, language, gender, sexual orientation, gender identity, gender expression, disability, appearance, or other group status.
- Sexual harassment or intimidation, including unwelcome sexual attention, stalking (physical or virtual), or unsolicited physical contact.
- Yelling at or threatening speakers (verbally or physically).

Speakers are asked to frame discussions as openly and inclusively as possible and to be aware of how language or images may be perceived by others. Participants may – and do – exercise the option of leaving a presentation or exhibit. Exhibitors must follow all WLA Exhibits rules, regulations and policies.

All participants are expected to observe these rules and behaviors in all conference venues, including online venues and conference social events. Participants asked to stop hostile or harassing behavior are expected to comply immediately. Conference participants seek to learn, network and have fun. Please do so responsibly and with respect for the right of others to do likewise.

If you believe you have been harassed or that a harassment problem exists, report the incident on WLA's website: <https://wla.memberclicks.net/report-form>.

After an online report is submitted, WLA will determine and carry out the appropriate course of action, and may engage WLA Directors, staff or legal counsel as appropriate. For more details about reporting, see WLA's Reporting Guide. at <http://wla.wisconsinlibraries.org/images/about/ReportingGuide.pdf>. Event security and/or local law enforcement may be involved, as appropriate based on the specific circumstances. A follow-up report will be made to individuals who report the harassment.

Special considerations for virtual events

The provisions of the Wisconsin Library Association Code of Conduct apply to virtual WLA events. We remind virtual event attendees to remember that threats, harassment, and intimidation are just as damaging when transmitted online as they are in person and will not be tolerated.

Attendees are prohibited from sharing content, recordings, chat logs, comments, or screenshots from WLA virtual events on any other online platforms or in any other virtual communications. Attendees should take only the notes they need for personal use. Recording of program sessions is prohibited, except for authorized agents of WLA capturing recordings for official WLA use.

Disruption of presentations during sessions or other conference events is not acceptable. Any attendees who attempt to take over screensharing or broadcast unrelated images or messages during a conference event shall be removed from the meeting. People found in violation of any part of the WLA Code of Conduct will face consequences including but not limited to: expulsion from the conference, prohibition from returning to any future virtual event, and will not receive a refund of their registration fees.

Questions/concerns about this policy should be sent to the WLA Executive Director (wla@wisconsinlibraries.org).

Adapted from the American Library Association Code of Conduct http://www.ala.org/conferencesevents/statement_appropriate_conduct.

Special Thanks

Special Thanks to Our Conference Partners We gratefully acknowledge the following for their support of the Wisconsin Library Association Annual Conference.

All-Conference Champion Sponsor
(Wednesday Keynote, Awards & Honors Reception)



Supporting Sponsor



YSS Luncheon Sponsored by
Jennie J. Stoltz

Tour of the Lake Geneva Public Library
Sponsored by



Author and Presenter Fair Sponsored by



Librarian of the Year Award
Sponsored by



Session Sponsor



Partner Sponsor
(Awards & Honors Reception)



Wednesday Refreshment Break Sponsored by



Thursday Keynote Address Sponsored in part by



Friday Keynote Address Sponsored in part by



Career Center Sponsored by



Conference At-A-Glance
Sponsored by



2022 Literary Awards

Children's Book Award Committee Honors

Elizabeth Burr/Worzalla Award

Lori M. Lee

for *Pahua and the Soul Stealer*

Wisconsin Notable Children's Author

Deborah Underwood

Outstanding Books of the Year

American Betiya by Anuradha D. Rajurkar

Rhino & Dino in: Juice! by Erin Kant Barnard

Butterfly for a King: Saving Hawai'i's Kamehameha Butterflies by

Cindy Trumbore and Susan L. Roth

Dear Librarian by Lydia M. Sigwarth

We Want Snow: A Wintry Chant by Jamie A. Swenson

Meena Lost and Found by Karla Manternach

Indestructible Object by Mary McCoy

The Fishermen, the Horse, and the Sea by Barbara M. Joosse,

illustrated by Renee Graef

The Traveling Camera: Lewis Hine and the Fight to End Child Labor

by Alexandra S. D. Hinrichs

365 Days to Alaska by Cathy Carr

WLA Literary and Wisconsin Notable Author award recipients will be announced during the Awards & Honors reception.

2022 Awards & Honors Recipients

Wisconsin Library Hall of Fame Inductee

Miriam Erickson

Library of the Year

McIntosh Memorial Library

WLA President's Volunteer Award

Kristina Gómez

Madison Public Library

WLA/Demco® Librarian of the Year

Angie Bodzislav

Spooner Memorial Library

SSCS Paralibarian of the Year

Ann Larson

Sherman & Ruth Weiss

Community Library

Programming Innovation

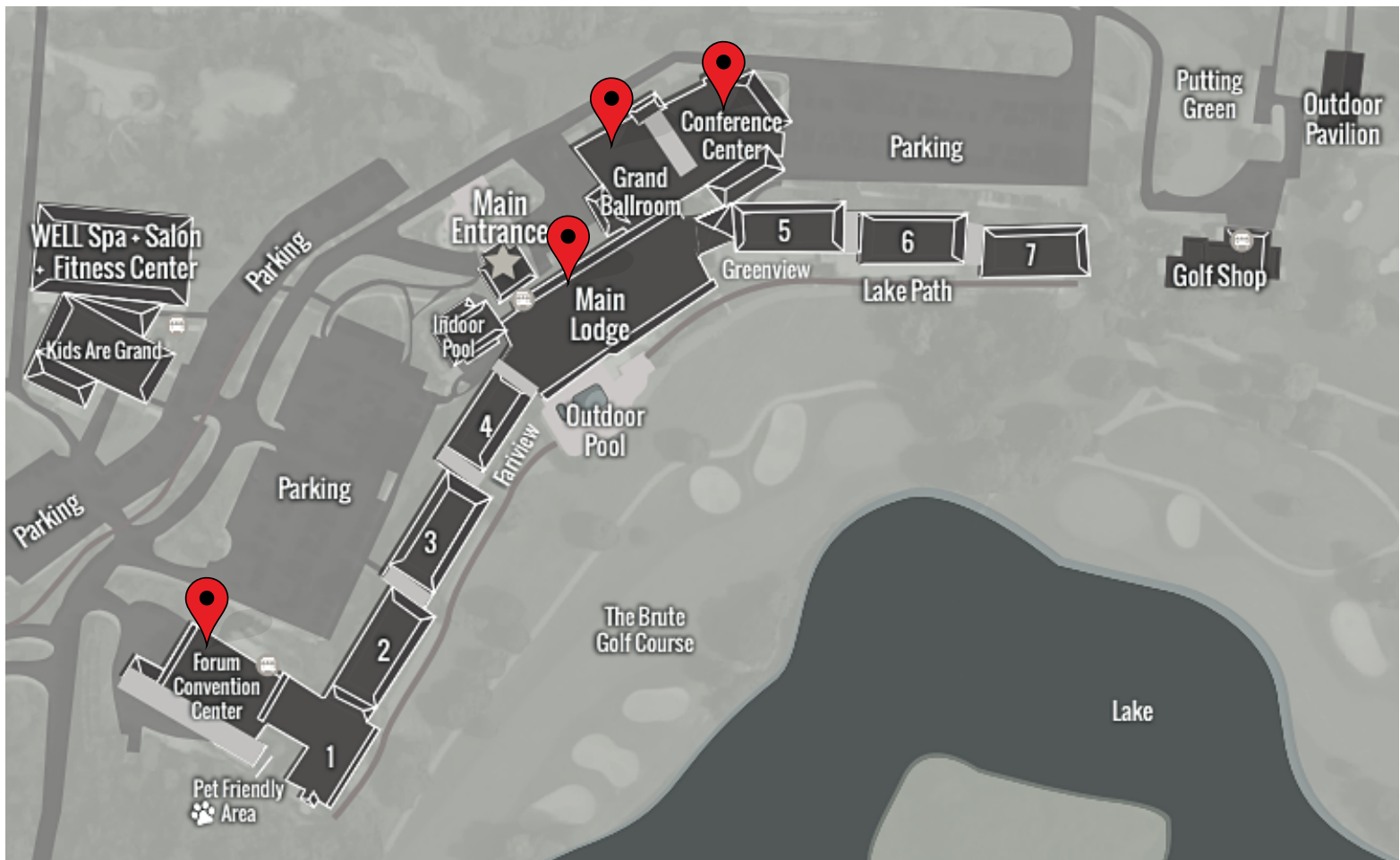
Elisha D. Smith Public Library

Trustee of the Year

Jenny Nelson

Oregon Public Library

Conference Center Maps

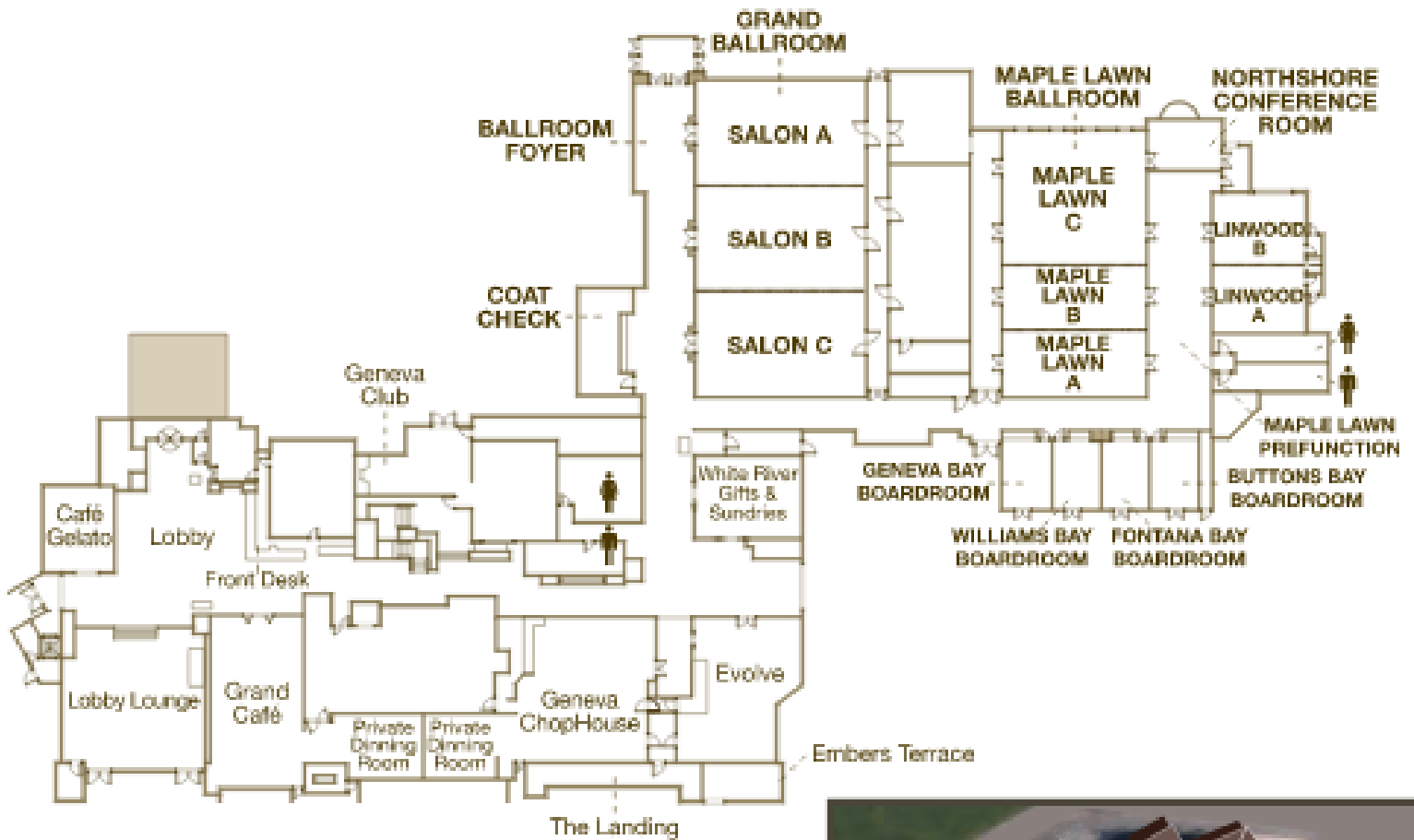


Full map of the resort can be found at:
<https://www.grandgeneva.com/about/resort-map>

**Building & Floor Maps
on the following pages!**

Conference Center Maps

THE LODGE MAIN LEVEL AND CONFERENCE CENTER

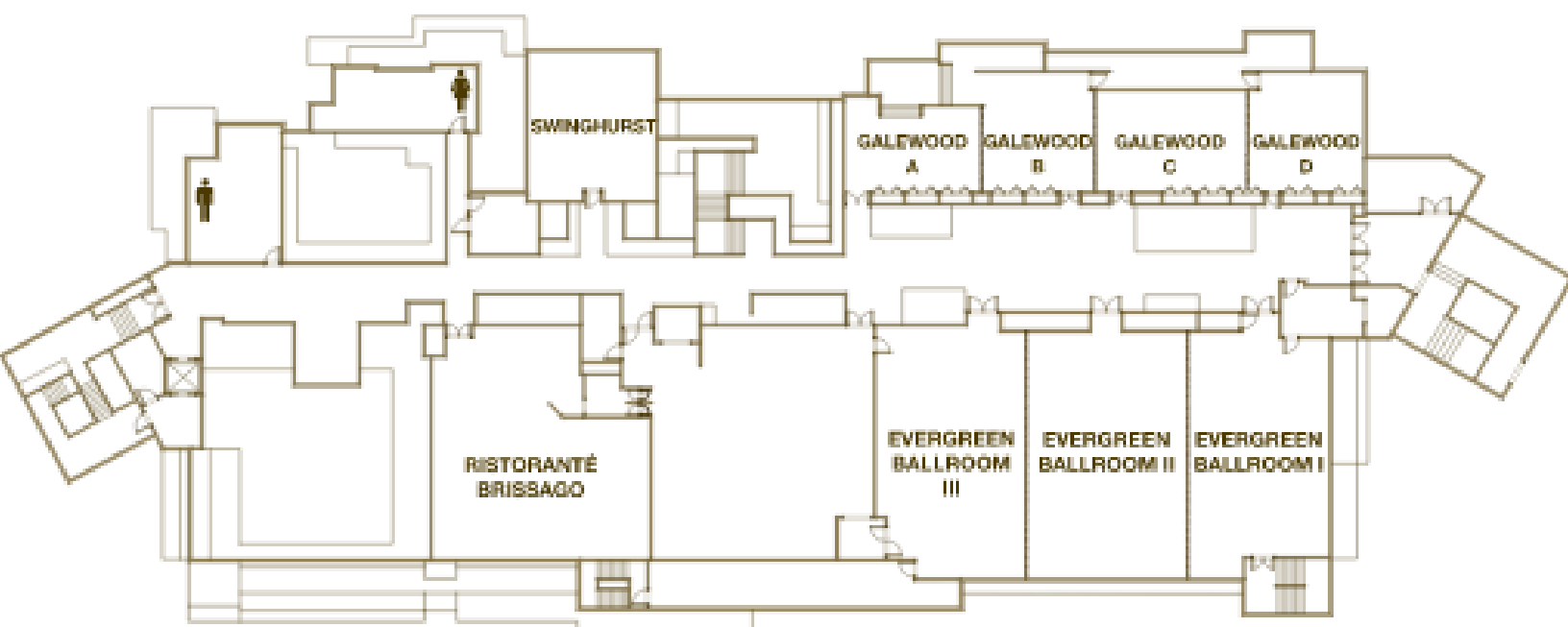


Conference Center Maps

THE LODGE LOWER LEVEL

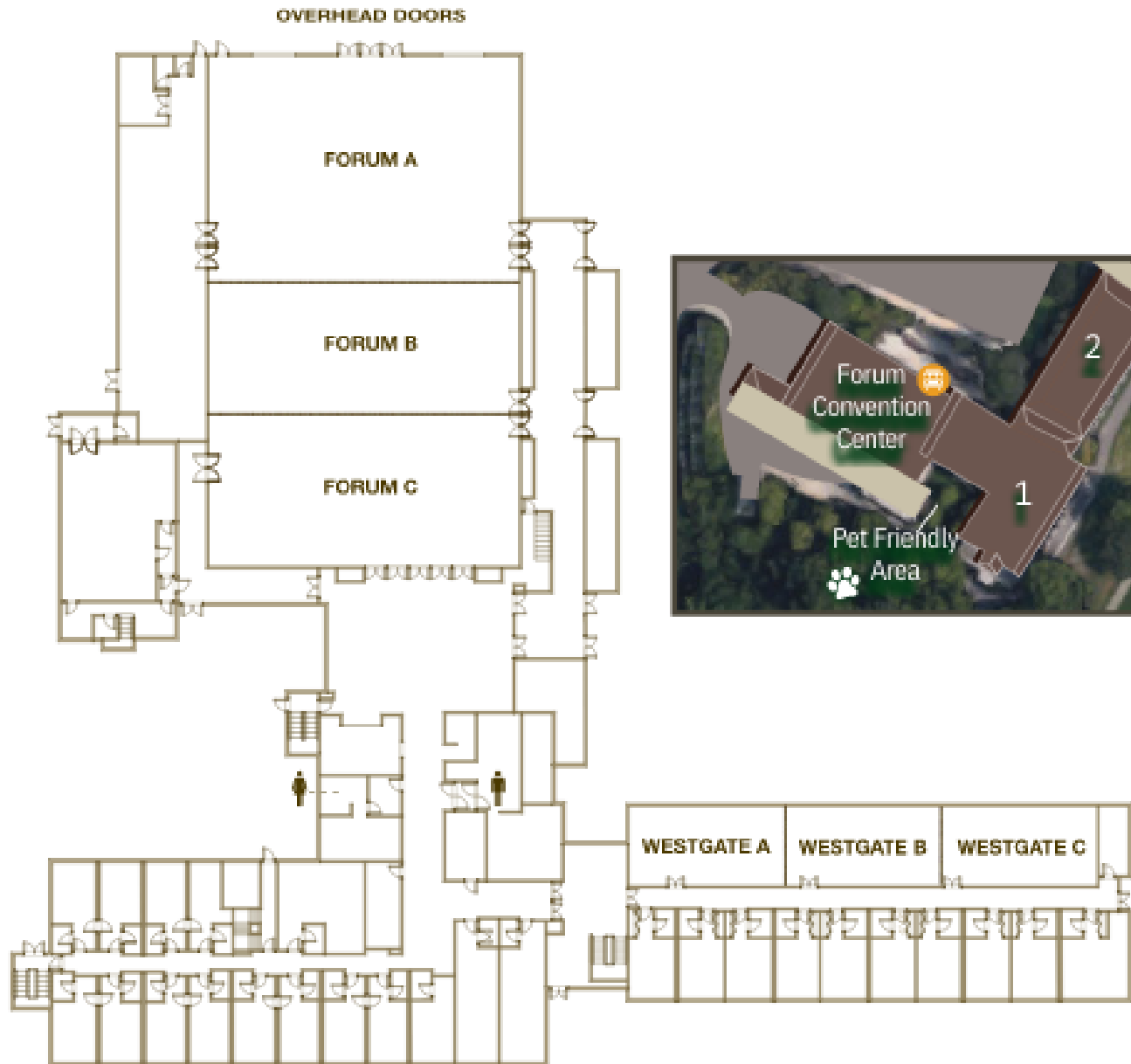


THE LODGE UPPER LEVEL



Conference Center Maps

THE FORUM AT THE LODGE



Thank you
to our
advertisers!



Libraries are
an act of love

OPN
ARCHITECTS
opnarchitects.com

iii innovative
Part of **Clarivate**



**Expand Your
Library Impact**
Solutions from Innovative

Every person.
Every community.

Visit www.iii.com



You are invited to
WILS
50th birthday party!

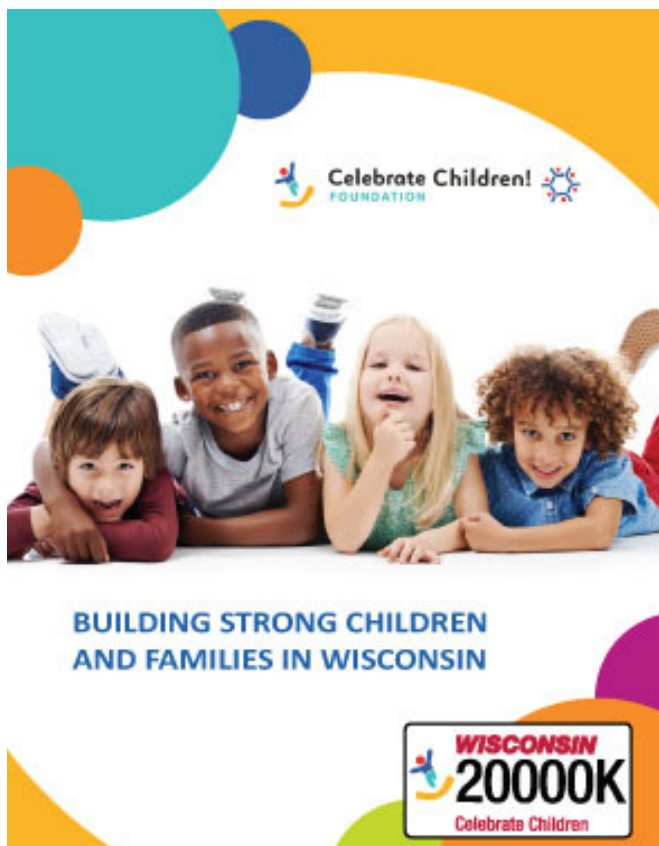
Date: Wednesday, November 2nd

Time: 2:30 pm

Place: Conference Exhibit Hall, Booth P102

We hope you'll join us to celebrate
50 years of service to Wisconsin libraries!

<https://wils.org>



lfi
library
furniture
international

total library furniture solutions

We are looking forward to the WLA annual conference!
Please visit us in the exhibit hall to say hello! We will be the folks with the library furniture and shelving. See what LFI can do for your library.

libraryfurnitureinternational.com

MASTER OF

Library & Information Science

Empowering people through information and technology for a more just, equitable and compassionate world.

Visit: stkate.edu/mlis

ST. CATHERINE
UNIVERSITY

St. Paul | Minneapolis

Special Events!



WLA Foundation Silent Auction Exhibit Area

Tuesday, November 1 – Thursday, November 3

Tuesday, November 1: Opening Reception, 7:00PM - 9:00PM

Wednesday, November 2: 7:00AM - 5:00PM

Thursday, November 3: 7:00AM - 3:30PM

Support the WLA Foundation and bid on fun, creative items! The auction closes Thursday at 3:30PM. Pick up and pay from 3:30PM - 4:30PM. Payment options include cash, check or credit card. The popular *Buy It Now* option will be available!

Tuesday

Opening Reception in Exhibit Hall

7:00PM - 9:00PM

Re-connect with old friends, make new acquaintances, and network with our exhibitors. Heavy hors d'oeuvres, pre-registration required.



Wednesday



Dungeons and Dragons Tabletop Role-Playing Game Grand Ballroom Foyer

6:00PM - 8:00PM

Have you ever been curious about Dungeons and Dragons but didn't know where to start? Get acquainted with the help of library colleagues with this fun and fascinating tool for collaborative storytelling and engagement. Register or drop in and see what all the buzz is about! Free and open to participants at all levels.

WLA Foundation Trivia Night Fundraiser

Evergreen Ballroom

8:00PM – 11:00PM

Join us for the WLA Foundation Fundraiser Trivia Contest hosted by WLA Vice President (and trivia master) Kris Turner! Here's your chance to show off your knowledge and enjoy a fun evening of random and obscure facts! Come as a team or play by yourself and compete for fun prizes. Light snacks, plus a charitable contribution to the Foundation! Snacks available. (\$30.00 at door)



Special Events!

Thursday



Tour of the Wisconsin School for the Deaf Library and Museum

309 W. Walworth Ave., Delavan, WI 53115

2:00PM - 4:00PM

***Sponsored by the WLA Association of
Special Librarians (AWSL)***

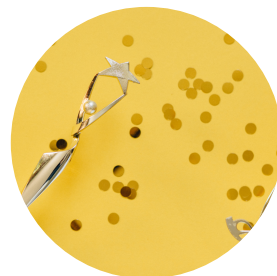
Join Librarian Nell Fleming for a tour of the Wisconsin School for the Deaf (WSD) Library and Museum. The Wisconsin School for the Deaf (WSD) is the only residential school for deaf and hard of hearing students (ages 3 - 21) in the state of Wisconsin. The Wisconsin School for the Deaf is a resource for the entire state of Wisconsin and has been in continuous operation since its founding and has operated since 1939 as a bureau of the state Department of Public Instruction. The museum at WSD preserves WSD's history through the many artifacts and photographs that are on display.

Awards & Honors Reception

The Chalet

6:30PM - 8:30PM

Sponsored in part by EBSCO and the Wisconsin Public Library Foundation. This event will give everyone the chance to congratulate and interact with award winners. There will be a formal presentation of awards during the reception. It's a chance to celebrate with the winners and raise a glass in their honor.



Sponsored by



EBSCO

Friday



Tour of the Newly Renovated Lake Geneva Public Library

918 W Main Street

11:00AM – 1:30PM

A tour of the newly renovated Lake Geneva Public Library. Sponsored by FEH Design; bottled water provided by Kwik Trip. Box lunch from The Cheese Box included – free to conference attendees. Limited to 50 attendees, pre-registration is required.



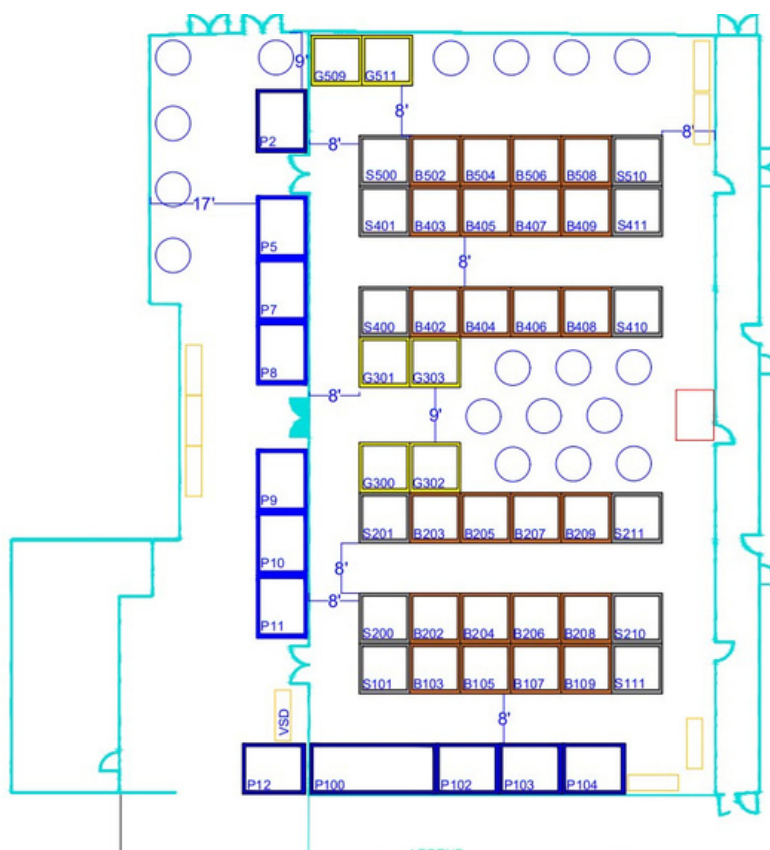
Erin Kant Barnard with her award-winning book
Rhino & Dino in: Juice!
 See us in the Author Garden!



Publishers of your new favorite book!
www.seabearpress.com



Exhibit Hall Floor Plan



AARP Wisconsin | Booth P13
 ABDO Books | Booth B406
 ADCI | Booth B502
 ALA | Booth B403
 Apple Books | Booth 107
 Auto-Graphics, Inc. | Booth P2
 Baker & Taylor | Booth S401
 Beanstack | Booth B409
 Bibliotheca | Booth G302
 Blackstone Library | Booth P11
 Brainfuse | Booth S500
 Brodart Company | Booth B206
 Cooperative Children's Book Center (CCBC) | Booth B404
 Covering Wisconsin | Booth 508
 Creativebug | Booth S210
 Data Axle, Inc. | Booth S410
 DPI-Library Services | Booth B402
 EBSCO Information Services | Booth G300
 Engberg Anderson, Inc | Booth P12
 EnvisionWare, Inc. | Booth 205
 FEH Design | Booth P9
 Hallett Movers | Booth S111
 Hope Institute of Uganda | Booth B105
 Innovative Interfaces | Booth 209
 The Kubala Washatko Architects | Booth S411
 Library Furniture International | Booth G509
 LibraryReads | Booth B407
 LocalHop | Booth P8
 Mad Science | Booth G301

NNLM: WI Partnership Outreach Program | Booth B408
 OCLC | Booth G303
 OPN Architects | Booth S400
 OverDrive | Booth S201
 PBS Wisconsin Education | Booth S101
 The Penworthy Company | Booth S200
 Playaway Pre-Loaded Products | Booth B208
 RMC Imaging Inc | Booth B506
 SCBWI: Society of Children's Book Writers and Illustrators- Wisconsin | Booth B504
 Scholastic Library Publishing | Booth S211
 SirsiDynix - Booth B204
 St. Catherine University - Online MLIS Degree | Booth P5
 TLC - The Library Corporation | Booth B203
 UW-Madison Information School | Booth B207
 UW - Milwaukee SOIS | Booth P10
 Visit Middleton | Booth B405
 WILS | Booth P102
 Wisconsin Historical Society Press | Booth B109
 Wisconsin Talking Book and Braille Library | Booth B202
 Yerges Moving & Storage | Booth B103
 Youth Services Section | Booth S510

Exhibitors

AARP Wisconsin – Booth P13

222 W Washington Ave. Ste: 600

Madison WI 53703

866-448-3611/608-949-4312

www.aarp.org/wi

Representative(s): Amber Miller

The nation's largest nonprofit, nonpartisan organization dedicated to empowering Americans 50 and older to choose how they live as they age.

ABDO Books - Booth B406

8000 W. 78th Street

Minneapolis MN 55439-2534

800-800-1312

www.abdobooks.com

Representative(s): Michele Gillman

ABDO is a leader in children's PreK–12 educational publishing for school and public libraries providing the best in reading and research for children and young adults while delivering unsurpassed customer service.

ADCI - Booth B502

30 Wisconsin Dells Parkway

Wisconsin Dells WI 53965

608-254-6181

www.adcidesign.com

Representative(s): David Cameron

Architectural Design Consultants, Inc. offers comprehensive architecture and interior design services to help our clients turn their vision into reality.

ALA - Booth B403

225 N Michigan Ave

Suite 1300

Chicago IL 60601

312-280-2429

<https://www.ala.org/>

Representative(s): Jon Martin

American Library Association and the ALA Annual Conference in Chicago, IL June 22-27, 2023.

<https://2023.alaannual.org/>

Apple Books – Booth 107

P.O. Box 3005

Mankato MN 56002

800-783-6767/612-386-0599

<https://applebks.com>

Representative(s): Matthew Kopyar

For over 25 years Apple Books has provided industry-leading customer service, an extensive catalog of titles for school and public libraries, and prompt delivery of products.

Auto-Graphics, Inc. – Booth P2

15218 Summit Ave, Ste. 300

Box 240

Fontana 92336

909-569-1514

www.auto-graphics.com

Representative(s): Alan Mask, Debbie Hensler

Auto-Graphics, Inc. is a library management and sharing software company and was the first to provide Cloud-based library resource management to library consortia in 1994.

Baker & Taylor - Booth S401

2810 Coliseum Centre Drive Suite 300

Charlotte NC 28217

251-209-7152

<https://www.baker-taylor.com/>

Representative(s): Curt Leppert

Baker & Taylor is the largest supplier of library content, software and services to public and academic libraries in the US. Through its Publishers Services business, the company also provides sales, manufacturing, warehousing and distribution support to small and mid-size publishers. With these solutions, Baker & Taylor is on a mission that will benefit thousands by improving community outcomes through literacy and learning.

Beanstack – Booth B409

3100 Claredon BLVD, #200

Arlington VA 22201

616-610-7690

www.beanstack.com

Representative(s): Meghan Olivier

Beanstack helps libraries effortlessly facilitate reading challenges and reading fundraisers. The flagship product of Zoobean Inc., Beanstack is licensed 10,000+ libraries around the world.

Bibliotheca – Booth G302

403 Hayward Ave N.

Oakdale MN 55128

800-328-0067

www.bibliotheca.com

Representative(s): Mason Humphrey and Kris Wheeler

For over 50 years, Bibliotheca has partnered with libraries to meet the needs of diverse communities. We work with 30,000 libraries across the globe, providing innovative technology that makes the library experience – physical & digital – seamless, intuitive, and inclusive. Join us and reimagine what a library can be.

Blackstone Library – Booth P11

31 Mistletoe Rd

Ashland OR 97520

800-621-0182

www.BlackstoneLibrary.com

Representative(s): Steve Wilks

Serving libraries since 1987, Blackstone Library is your one-stop shop for audiobooks. We provide top-quality audio content, offering over 100,000+ unabridged titles with more than 1,200 new releases and 625+ exclusive titles added each month.

Brainfuse - Booth S500

271 Madison Ave.

New York NY 10016

866-272-4638

www.brainfuse.com

Representative(s): Troy Weiman

Brainfuse is America's premier one-to-one online tutoring provider. Learn more about our award-winning services at www.brainfuse.com, or email us at info@brainfuse.com to schedule a webinar.

Exhibitors Continued...

Brodart Company - Booth B206

500 Arch Street
Williamsport PA 17701
www.brodart.com

Representative(s): Patrick Deering

Brodart pioneered the book jacket cover in 1939. Today, Brodart provides a broad range of collection development/cataloging services, supplies and furnishings, and custom furniture.

Cooperative Children's Book Center (CCBC) - Booth B404

600 North Park Street, Room 4290
Madison, WI 53706
608.262.9503
608.262.4933

www.education.wisc.edu/ccbc/

Representative: Megan Schliesman

Cooperative Children's Book Center (CCBC) displays a selection of books published for children and young adults.

Covering Wisconsin - Booth 508

1300 Linden Drive
Madison WI 53706
608.262.1838
www.coveringwi.org

Representative(s): Courtney Harris

Covering Wisconsin is a nonprofit organization that helps people in Wisconsin find and use health insurance.

Creativebug - Booth S210

2560 Ninth Street
Unit 314/316
Berkeley CA 94710
United States
779-220-0454

<https://www.creativebug.com/libraries>

Representative(s): Meaghan Haddad-Null

Creativebug is an unlimited-access online arts & crafts instructional video library with public performance rights.

Data Axle, Inc. - Booth S410

1001 Fort Crook Rd. North
Suite 150L
Bellevue, NE 68005
United States
800-808-1113/402-836-1226

<https://referencesolutions.data-axle.com/>

Representative(s): Andra Roussel and Heather Zamet
Reference Solutions is a powerful online reference and research tool providing library cardholders instant, real-time access to accurate, in-depth information on U.S. businesses and U.S. residents.

Department of Public Instruction - Library Services - Booth B402

125 S. Webster Street
Madison WI 53703
608-264-6704

<https://dpi.wi.gov/libraries>

Representative(s): Jennifer Robertson

The Library Services Team serves as Wisconsin's State Library Administrative Agency and works to empower Wisconsin's libraries to best serve their communities' needs.

EBSCO Information Services - Booth G300

10 Estes Street
Ipswich MA 01938
978-356-6500
www.ebsco.com

Representative(s): Jim Jacobson and Paula Brewster

EBSCO Information Services is the preeminent provider of online research content and search technologies for academic, school and public libraries. Learn more at: www.ebsco.com.

Engberg Anderson, Inc - Booth P12

320 E Buffalo Street
Suite 500
Milwaukee WI 53202-5883
414-944-9000

www.engberganderson.com

Representative(s): Janine Kolbeck

Wisconsin based architectural firm that focuses on library spaces. We collaborate with clients to help them achieve their goals and utilize their vision.

EnvisionWare, Inc. - Booth 205

1960 Satellite Blvd., Suite 4100
Duluth GA 30097
678-894-5771/770-823-5173
www.envisionware.com

Representative(s): Peton Nielsen

EnvisionWare delivers world class computer and financial management software, RFID circulation, security and inventory systems, Automated Materials Handling solutions, professional consulting services dedicated to the efficient delivery of exceptional service to library patrons and the 24-Hour Library.

FEH Design - Booth P9

951 Main Street
Dubuque IA 52001
563-583-4900
www.fehdesign.com

Representative(s): Katie Stork

FEH DESIGN, with its many years of experience in library design, will help you explore new possibilities in planning one of the most important facilities in your community. Our unique approach incorporates active community participation in the design process to ensure your library provides all the services important to your community.

Hallett Movers - Booth S111

7535 W. 59th Street
Summit IL 60501
708-458-8600
<https://www.hallettmovers.com/>

Representative(s): Valarie Brocato

Experienced staff, efficient solutions, and exceptional service: Hallett Movers is the premier nationwide library relocation company with global experience. Family run for more than 65 years— now managed by the third generation and woman-owned— Hallett combines unique systems of planning, packing, and relocating materials with nimble problem-solving to safely move collections for new buildings, renovations, re-carpeting, and other refresh projects. Please visit our booth to discuss!

Exhibitors Continued...

Hope Institute of Uganda – Booth B105

2980 S. Sandra Ln
New Berlin WI 53151
608-291-7511

Representative(s): Katie Ehle

Hope Institute of Uganda works to change generations one life at a time through education, medical care, and entrepreneurship training.

Innovative Interfaces – Booth 209

1900 Powell Street Suite 400
Emeryville CA 94608
224-201-3319
www.iii.com

Representative(s): Lisa Honcharuk

Innovative, a Clarivate company, provides leading technology solutions and services that empower libraries and enrich their users worldwide.

The Kubala Washatko Architects – Booth S411

W61N617 Mequon Avenue
Cedarburg WI 53012
262-377-6039
www.tkwa.com

Representative(s): Wayne Reckard

TKWA is a full-service architecture, planning, and interior design studio. We design built environments that support and enhance human activity and natural living systems.

Library Furniture International – Booth G509

767 Glenn Ave
Wheeling IL 60089
847-564-9497

www.libraryfurnitureinternational.com

Representative(s): Michelle Zernik

Library Furniture International (LFI) is a full-service firm specializing in the sale and service of library furnishings. We help libraries meet the rapidly changing sociological and technological growth in their community through design and product. LFI provides product options, quotes, and installation services to those that have specific needs. The end-result is to deliver unconditional satisfaction to our library clients. Whether your needs call for purchasing one section of shelving or an entire library of furnishings, LFI will have the solution that works for you.

LibraryReads - Booth B407

1433 Marengo Ave
Forest Park IL 60130
708-552-0515

www.libraryreads.org

Representative(s): Rebecca Vnuk

LibraryReads produces the monthly Top Ten list of adult titles library staff across the US are recommending to their patrons. Join us!

LocalHop - Booth P8

31 Saginaw Street
Pontiac MI 48342
248-952-9800 / 248.640.0472
www.getlocalhop.com

Representative: Rachel Sussbauer

LocalHop is an integrated suite of event management tools that can be tailored to fit your Library's needs. Simply designed to efficiently help connect your local community.

Mad Science – Booth G301

2855 S. 160th Street
New Berlin WI 53151
262-330-5029/414-858-9990
www.milwaukee.madscience.org

Representative(s): Maria Tarantino

Mad Science is on a mission to get kids excited about Science! Our stage shows and interactive workshops will captivate all your patrons on any occasion. Our children's events are hassle-free, adaptable, and action-packed! Most of our available in person and in virtual formats. We'll have everyone oohing and ahing as they watch our over-the-top science demonstrations and participate in fun Hands-on experiments. We have shows and workshops correlated to Holidays, Seasons and the Summer Reading Theme.

NNLM: WI Partnership Outreach Program – Booth B408

750 Highland Ave Ebling Library
Madison WI 53593
608-262-1174/573-239-5421

www.nnlm.gov

Representative(s): Michelle Harrell, Eric Harding, and Hayley Severson

The Network of the National Library of Medicine is represented by UW-Madison's Ebling Library and the Medical College of Wisconsin Libraries.

OCLC - Booth G303

6565 Kilgour Pl.
Dublin OH 43016
614-764-6000
www.oclc.org

Representative(s): Marina Caropreso

Through collaboration and innovation, OCLC technology products, original research, and community programs empower libraries to better serve their communities.

OPN Architects – Booth S400

301 N Broom Street
Cedar Rapids IA 52401
319-363-6018

www.opnarchitects.com

Representative(s): Carly Weber

OPN's approach to library design is based on our belief that libraries should be unique and specific to the needs of the community, efficient to operate and beautiful in design.

OverDrive – Booth S201

1 OverDrive Way
Cleveland OH 44125
216-573-6886

www.company.overdrive.com

Representative(s): Diane Stefancin and Paula Roman

Extend beyond your physical walls by offering ebooks, audiobooks, magazines and streaming media. With millions of premium titles, OverDrive has the largest digital catalog for libraries.

Exhibitors Continued...

PBS Wisconsin Education – Booth S101

821 University Avenue
Madison WI 53706
608-890-4534
www.pbswisconsineducation.org
Representative(s): Mouna Algahaihi
PBS Wisconsin creates and curates high-quality, educational media resources for learners, preschool through high school. Need ideas or resources for revamping your programs? Stop by our booth!

The Penworthy Company – Booth S200

219 N. Milwaukee St
Milwaukee WI 53202-5844
815-236-5940/414-287-4600
www.penworthy.com
Representative(s): Nancy Stetzing
The Penworthy Company is the exclusive source of Penworthy Prebound Books, the most attractive and durable children's library books on the market and educational themes STEAM kits. At Penworthy we believe in extraordinary quality, expert selection and exceptional service.

Playaway Pre-Loaded Products – Booth B208

31999 Aurora Road
Solon OH 44139
877-893-0808
Peter Wuerl: 708-912-0796
Lindsay Hooper: 330-429-0083
www.shop.playaway.com
Representative(s): Lindsay Hooper
Playaway Pre-Loaded audiobooks, learning apps, videos, and read and sing-alongs give libraries everything they need to promote literacy, bridge the digital divide, and make technology accessible to everyone. No WiFi, no downloads, no separate device needed. All Playaway products are ready-to-use right off the shelf.

RMC Imaging Inc - Booth B506

780 Creek Bluff Lane
Rockford IL 61114
708-309-9597
www.stimaging.com
Representative(s): Bob Czechowicz
ST Imaging Viewscan 4 18 mega pixel HD Digital Color Microfilm Reader Printer with PerfectView software and Next Generation OCR Plus Software. We also offer microfilm Conversion.

SCBWI: Society of Children's Book Writers and Illustrators- Wisconsin – Booth B504

P.O. Box 6
Genesee Depot WI 53127-0006
www.wisconsin.scbwi.org
262-385-0854
Representative(s): Sandy Brehl and Deb Buschman
Society of Children's Book Writers and Illustrators represent the creators of many of the books on library shelves for audiences age 0-20. Schedule available at our booth for authors onsite, handouts, book raffles.

Scholastic Library Publishing – Booth S211

1030 O'Ryan Trail North
West Lakeland MN 55082
651-303-3460
www.scholastic.com/librarypublishing
Representative(s): Gabe Flynn, Matthew Kopyar
Scholastic Library offers the best fiction & non-fiction books and award-winning digital products like BookFlix and GO! for your library.

SirsiDynix - Booth B204

3300 N Ashton Blvd. Ste. 500
Lehi UT 84043
800-288-8020
www.sirsidynix.com
Representative(s): Samantha Gustman
SirsiDynix is the world's leading provider of library technology solutions, connecting more than 300 million people with information and resources at 20,000 academic, public, government and corporate library facilities worldwide.

St. Catherine University - Online MLIS Degree - Booth P5

2004 Randolph Avenue
St. Paul MN 55105
612-619-4142
<https://www.stkate.edu/academics/academic-programs/gc-library-and-information-science>
Representative(s): Greg Steenson
St. Catherine University's online, ALA-accredited Master of Library and Information Science degree empowers library professionals to create a more just, equitable and compassionate world.

TLC - The Library Corporation – Booth B203

Research Park
Inwood WV 25428
304-229-0100
www.tlcdelivers.com
Representative(s): Judy Price
The Library Corporation is a woman-owned, international technology company with industry-leading support, providing enterprise software systems, hardware solutions, and data services that are trusted by more than 5,500 libraries and media centers worldwide.

UW-Madison Information School – Booth B207

600 N Park Street
Madison WI 53706-1403
www.ischool.wisc.edu
608-263-2900
Representative(s): Tanya Hendricks Cobb
Master's degree, PhD and certificate programs, and continuing education for library and information professionals. New Master of Science in Information and Bachelor's in Information Science programs! Our learning environment, rooted in innovation, creative problem solving, and community, sets our graduates up to become natural leaders in the information professions.

UW - Milwaukee SOIS - Booth P10

PO Box 413
Milwaukee WI 53201
414-229-4707
<http://ischool.uwm.edu>
Representative(s): Julie Walker, Dietmar Wolfram, Chad Zahrt, Toby Deutsch, Rebecca Hall, and Laura Meyer

Exhibitors Continued...

Visit Middleton - Booth B405

1811 Parmenter Street
Middleton WI 53562
608-831-3399

www.visitmiddleton.com

Representative(s): Laura Portz

In Middleton we invite our visitors to relax, enjoy and discover all that our beautiful city has to offer. It's all about the middle things.

WiLS – Booth P102

1360 Regent St. #121
Madison WI 53715
608-218-4480

<https://www.wils.org/>

Representative(s): Jeff Brunner, Jennifer Chamberlain, Melody Clark, Andi Coffin, and Lisa Marten

WiLS is a nonprofit membership organization that saves libraries and cultural organizations time and money through affordable custom and collaborative services.

WiLS believes libraries and cultural institutions make the world a better place and helps them turn their ideas into action.

Wisconsin Historical Society Press – Booth B109

816 State Street Rm 443
Madison WI 53706-1417

608- 264-6465

www.wisconsinhistory.org/whspress

Representative(s): Chris Caldwell

By collecting, preserving, and sharing our stories, the Wisconsin Historical Society Press publishes books in Wisconsin history and culture that connect people to the past.

Wisconsin Talking Book and Braille Library – Booth B202

813 W Wells Street
Milwaukee WI 53233
414-286-3045/414-286-6918

<http://dpi.wi.gov/talkingbooks>

Representative(s): Katie Saldutte

The Wisconsin Talking Book and Braille Library (WTBBL) provides audiobooks and Brailled materials to persons, living in Wisconsin, who cannot read or use regular print materials as a result of temporary or permanent visual or physical limitations.

Yerges Moving & Storage – Booth B103

P.O. Box 339
Fort Atkinson, WI 53538-0339
920-563-5000

www.yergesmoving.com

Representative(s): Kevin Becker

Commercial movers with extensive experience in library relocation and remodeling projects. Also moving of medical equipment and household furniture. On site storage available.

Youth Services Section - Booth S510

<https://www.wisconsinlibraries.org/youth>

The Wisconsin Library Association's Youth Services Section (YSS) advocates for professional empowerment, collaboration, and innovative, inclusive, and intentional service. To that end, YSS provides a forum and resources for people in Wisconsin's libraries who share a commitment to serving children and young adults, their parents, caregivers, and teachers.

Author and Presenter Fair

Cindy Wilson

Author

thebeautifulsnow.com

cindy@thebeautifulsnow.com

Topics around the real history of the Hard Winter of 1880-81 and Laura Ingalls Wilder's novel The Long Winter.

Julie Murphy Agnew

Author

<https://www.lifecyclewellingbeing.com/>

initttogetherbook@gmail.com

The year 2020 was hard and heavy, yet it also provided new experiences, important lessons, and opportunities. "In It Together" playfully and powerfully provides a story of the year that unifies the audience.

Historic Voices

Laura Keyes

www.HistoricVoices.info

lfkeyes@gmail.com

Historic Voices offers entertaining and educational programming for all ages, available both in-person and virtually.

Erin Kant Barnard - Author

Seabear Press

www.seabearpress.com

editor@seabearpress.com

Rhino & Dino in: Juice! Winner- WLA Outstanding Achievement in Children's Literature 2022 and Rhino & Dino in: Lemonade! Seabear Press - Publishers of your new favorite book!

Exhibit Categories

Architecture & Design

ADCI
FEH Design
OPN Architects
The Kubala Washatko Architects

Associations

American Library Association

Audio Materials

Blackstone Library
Brodart Company
Playaway Pre-Loaded Products
Scholastic Library Publishing
Wisconsin Talking Book and Braille Library

Book Jobber/Wholesaler

Apple Books

Books

Baker & Taylor
Blackstone Library
Brodart Company
Hope Institute of Uganda
LibraryReads
Scholastic Library Publishing

Children's Books/Materials

ABDO Books
Beanstack
Brodart Company
Hope Institute of Uganda
SCBWI: Society of Children's Book Writers and Illustrators- Wisconsin
Scholastic Library Publishing

Children's Programs

Mad Science
PBS Wisconsin Education

Consortium

NNLM: WI Partnership Outreach Program

Databases

Creativebug
EBSCO Information Services
Scholastic Library Publishing

Distributor

Apple Books
Brodart Company
Hope Institute of Uganda
The Penworthy Company

DVDs & Videos

Brodart Company
OverDrive

Education

AARP Wisconsin
Beanstack
Brainfuse
Hope Institute of Uganda
Mad Science
NNLM: WI Partnership Outreach Program
PBS Wisconsin Education
St. Catherine University - Online MLIS Degree
UW-Madison Information School
UW-Milwaukee SOIS

Engineers

FEH Design
OPN Architects
The Kubala Washatko Architects

Furniture

Library Furniture International

Government Information

Department of Public Instruction - Library Services
NNLM: WI Partnership Outreach Program

Interior Design

FEH Design
OPN Architects
The Kubala Washatko Architects

Library Automation

Auto-Graphics, Inc.
Innovative Interfaces
SirsiDynix
TLC - The Library Corporation

Literacy

Beanstack
Covering Wisconsin
Mad Science
NNLM: WI Partnership Outreach Program
PBS Wisconsin Education

Microform/Microform Equipment

RMC Imaging Inc

Movers & Storage

Hallett Movers
Yerges Moving and Storage

Online Databases for Reference

ABDO Books
Data Axle, Inc

Online Encyclopedia Databases

ABDO Books

Online Information

EBSCO Information Services
NNLM: WI Partnership Outreach Program

Program Resources

Creativebug
Visit Middleton

Publishers

Blackstone Library
LibraryReads
Scholastic Library Publishing
Wisconsin Historical Society Press

Reference Materials

ABDO Books
Brodart Company
EBSCO Information Services
Scholastic Library Publishing

Exhibit Categories, cont.

Reference Materials

ABDO Books
Brodart Company
EBSCO Information Services
Scholastic Library Publishing

Security

EnvisionWare, Inc.

Self-check

Bibliotheca
EnvisionWare, Inc.

Shelving

Hallett Movers

Subscription Services

EBSCO Information
Services
LocalHop

Technology Management

EnvisionWare, Inc.
OCLC

Video

Creativebug

RFID

EnvisionWare, Inc.

Book Signings

Wednesday, November 2

8:00AM - 9:00AM Jason Reynolds - Keynote Speaker (signing afterward)

Long Way Down

As Brave As You

For Every One

Long Way Down (graphic novel)

Look Both Ways

Thursday, November 3

11:30AM - 1:00PM Kevin Henkes - YSS Luncheon (signing afterward)

Oh, Sal

A House

Kitten's First Full Moon

Sun Flower Lion

Waiting

The Year of Billy Miller

Thursday, November 3, cont.

4:30PM - 5:30PM Lori M. Lee 2022

Burr/Worzalla Winner (signing afterward)

Pahua and the Soul Stealer

Friday, November 4

11:30AM - 12:30PM Dasha Kelly Hamilton
Closing Session

(signing afterward)

Life in Short

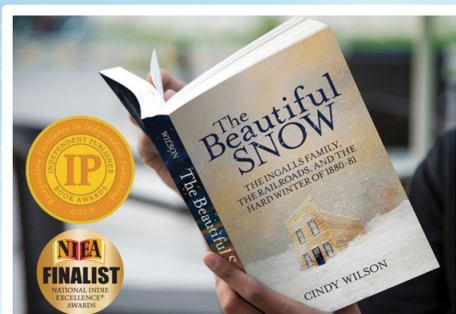


Presentations about the history behind the Hard Winter of 1880-81 and *The Long Winter* by Laura Ingalls Wilder

I offer five presentations, each approaching the Hard Winter from a different perspective. One is intended for younger audiences, the others for older audiences (high school+).

Options include: An Overview of the Hard Winter; The Big Cut West of Tracy; How the Hard Winter Became *The Long Winter*; an Author Talk; and a mostly-photo-based look at the weather and trains, intended for younger audiences.

All are based on research done for the award-winning book *The Beautiful Snow*.



I look forward to seeing you at the Author and Presenter Fair!
I'll be there Wednesday November 2 from 7am to 5pm
or learn more at TheBeautifulSnow.com
Cindy@thebeautifulsnow.com



The Information School
AT UW-MADISON

Become an Information Expert

COURTNEY BECKS
MA 2017

ON-CAMPUS OR ONLINE



Librarianship



Digital
Archives



Information
Organization + Analytics



Data
Management



UX + Information
Technology



Quality learning opportunities from one of the nation's top universities. UW-Madison's iSchool offers innovative coursework that builds on a rich tradition of excellence. [Learn more at ischool.wisc.edu](https://ischool.wisc.edu).

FEATURED SPEAKERS

Jason Reynolds – Keynote

Author - *Sponsored by the WLA Foundation*

Jason Reynolds is a #1 New York Times bestselling author whose award-winning book *Look Both Ways: A Tale Told in Ten Blocks* was a National Book Award Finalist, Carnegie Medal winner, and named one of the best books of 2019 by NPR, School Library Journal, and many more. He's currently serving as the National Ambassador for Young People's Literature. For more information on this Speaker please visit www.simonspeakers.com

Session: Jason Reynolds Keynote Address, November 2, 2022 8:00 AM - 10:00 AM

Alison Macrina – Keynote

Director, Library Freedom Project

Alison is an activist librarian and the director of Library Freedom Project. Alison started LFP in 2015 to build community with other librarians who are dedicated to library values of privacy, intellectual freedom, social responsibility, and the public good. She works from a justice orientation, rooted in a materialist analysis that emphasizes people's real-life conditions, recognizing the systems responsible for oppression and their inherent contradictions. <https://libraryfreedom.org/team/alison-macrina/>

Sessions: (Keynote) Intellectual Freedom and Social Justice: Library Values in Conflict

November 3, 2022 8:00 AM - 10:00 AM **Sponsored in part by**  Arrowhead Library System

(Breakout) Holding Library Vendors Accountable to Privacy and Information Equity Values

November 3, 2022 10:00 AM - 11:00 AM

Kevin Henkes – YSS Wednesday Luncheon

Author - *Sponsored by Jennie J. Stoltz*

Caldecott Medalist, Newbery Honoree, and #1 New York Times bestselling author and illustrator Kevin Henkes will discuss the different kinds of books he creates from picture books for the very young to storybooks for older children to books for those just beginning to read to novels for older readers. He will explain how they are different and how they are similar. His talk will include his thoughts about imagination, process, and the power of reading. Kevin Henkes has written and illustrated 61 books, including *Olive's Ocean*, *The Year of Billy Miller*, *Chrysanthemum*, and the beloved *Lilly's Purple Plastic Purse*, in a career that has spanned more than 40 years. In 2020, he was the recipient of the American Library Association's Children's Literature Legacy Award for his lasting contribution to literature for children.

Session: YSS Luncheon, Kevin Henkes

November 2, 2022 11:30 AM - 1:00 PM

FEATURED SPEAKERS

Continued...

Barbara Lawton – Thursday Luncheon

Wisconsin Lieutenant Governor (2003-2011)

When Barbara Lawton began the first of two terms as Wisconsin's first woman elected lieutenant governor, she left behind a beloved study carrel at the UW-Madison library where she had been working toward a Ph.D in Spanish. In office, she was recognized as a national and international leader with her economic development initiative, "Wisconsin Women = Prosperity." She was a founding Advisory Board member to the WI Institute of Public Policy and Service and continues that role with Oxfam America's Sisters on the Planet. Lawton serves on the University of Wisconsin Hospital and Clinic Advisory Board and Lawrence University's Board of Trustees. She co-founded Issue One, a national nonpartisan, nonprofit advocacy organization dedicated to fixing our broken political system and strengthening our democracy.

Session: Luncheon, Barbara Lawton

November 3, 2022 11:30 AM - 1:00 PM

Dasha Kelly Hamilton – Closing Session

Creative Change Agent, 2021-2022 Wisconsin and Milwaukee Poet Laureate

Dasha Kelly Hamilton is a writer, performance artist, curator, and facilitator. Ultimately, she's a creative change agent, leveraging the creative process toward human and social wellness. Her nonprofit, Still Waters Collective, initiated literary arts programming for 20 years, creating platforms for thousands of voices to be honored and heard. The organization continues to partner on impact projects, including a creative leadership fellowship. Dasha has written for national, regional and local magazines; produced three collections of poetry; recorded four spoken word CDs; published two novels and one collection of personal vignettes; has work included in several anthologies; and performed in the last season of HBO's Def Poetry Jam. Her stage production, Makin' Cake, is touring nationally.

Dasha served as an Arts Envoy for the U.S. Embassy to teach, perform and facilitate community building initiatives in Botswana and the island of Mauritius. She was also an artist in residence in Beirut and Toronto. Dasha has been an adjunct professor at Mount Mary University, Alverno College, Bryant & Stratton, the University of Wisconsin-Milwaukee and a recruiter and mentor with University of Wisconsin's First Wave Scholars Program. She holds an MFA in Creative Writing from Antioch University, an MA in Marketing Communications from Roosevelt University and a BS in Public Relations from Illinois State University. Dasha is former Artist of the Year for the City of Milwaukee and the city's 11th Poet Laureate. She has been named a 2020 national Rubinger Fellow and 2021-22 Poet Laureate for the State of Wisconsin. In 2021 she earned a National Laureate Fellowship award with the Academy of American Poets. This year she will serve as the endowed Social Justice Chair for Milwaukee Area Technical College.

Session: A Line Meant: The Life of a Creative Change Agent

November 4, 2022 11:15 AM - 2:00 PM

Sponsored in part by



Career Center

Attention Job Seekers and Hiring Managers! Whether you are new to the workforce or a seasoned professional, the Career Center at the WLA Annual Conference has something for you.

Job Seekers

- Sign up for a free resume review [here](#).
- Review job postings and interact with hiring managers on Whova.

Hiring Managers

- Post jobs and interact with potential candidates on Whova.

[Click here](#) to find the Job Postings section on the Whova app. [Click here](#) to find the Job Postings section from the Whova website application. A binder of job postings will be available for potential candidates to review onsite at the conference.

The Career Center is sponsored by:



The Artists of Organic Arts

www.performingartsmilwaukee.com
orgarts@gmail.com / 414-702-6053

Rising to the Challenge

Lifelong Professional Performing Artists presenting Storytelling, Folk and American Music, Children's Book Authors and History Programs For Communities throughout Wisconsin year-round.

Schedule

Tuesday

1:00 PM - 3:00 PM

SRLAAW Business Meeting

Maple Lawn C

2:00 PM - 6:00 PM

Registration

Grand Ballroom Foyer

3:30 PM - 5:30 PM

Intellectual Freedom SIG meeting

Maple Lawn C

4:30 PM - 6:00 PM

WLA Board of Directors Meeting and Dinner

Williams Bay Boardroom

7:00 PM - 9:00 PM

Opening Reception (with Tradeshow and Start of WLA Foundation Silent Auction)

Exhibit Areas (In the Grand Ballroom and the Grand Ballroom Foyer)

Re-connect with old friends, make new acquaintances, and network with our exhibitors. Heavy hors d'oeuvres, pre-registration required.

WLA Foundation Silent Auction

Located in the Exhibit Area in the Grand Ballroom
Support the WLA Foundation and bid on fun, creative items! The auction closes Thursday at 3:30 p.m. Pick up and pay from 3:30 p.m. - 4:30 p.m. Payment options include cash, check or credit card. The popular Buy It Now option will be available!

Wednesday

Wednesday

7:00 AM - 5:00 PM

Registration

Grand Ballroom Foyer

Exhibit Hall Open

Exhibit Areas

WLA Foundation Silent Auction Continues

Located in the Exhibit Hall in the Grand Ballroom
Support the WLA Foundation and bid on fun, creative items! The auction closes Thursday at 3:30 p.m. Pick up and pay from 3:30 p.m. - 4:30 p.m. Payment options include cash, check or

credit card. The popular Buy It Now option will be available!

7:00 AM - 8:00 AM

Attendee Breakfast

Exhibit Areas (In the Grand Ballroom and the Grand Ballroom Foyer)

7:00 AM

WISL Business Meeting

Williams Bay Boardroom

7:45 AM

Trolley Pickup for Keynote

Main Entrance

8:00 AM - 9:00 AM

Keynote: Jason Reynolds - National Keynote Speaking on Our Theme of Rising to the Challenge - Sponsored by the WLA Foundation The Forum

Jason Reynolds is a #1 New York Times bestselling author whose award-winning book *Look Both Ways: A Tale Told in Ten Blocks* was a National Book Award Finalist, Carnegie Medal winner, and named one of the best books of 2019 by NPR, School Library Journal, and many more. He's currently serving as the National Ambassador for Young People's Literature. For more information on this Speaker please visit www.simonspeakers.com

10:00 AM - 3:00 PM

Career Center: Resume Review & Interview Tips

Buttons Bay Boardroom

Sign up in advance for an appointment for [Resume Review](#) or [Interview Tips](#).

10:00 AM - 11:00 AM

Notable Books (and More) Marathon

Loramoor A

Jean Anderson, Consulting Services

Coordinator, South Central Library System;

Helene Androski, Reference and Instruction

Librarian (Retired), UW Madison; Eliot

Finkelstein, Public Services Librarian, UW-Madison; **Amy Lutzke**

The Notable Books Panel is Rising to the Challenge and expanding our reach beyond the ALA Notable Booklist. The four-librarian panel will highlight titles from the current WLA Literary Award Committee's Outstanding Achievement list, the ALA Notable Books List, and one Award List of their choosing. Come and hear about

award winning books to add to your library's collection and your TBR.

Transform Your Library on A Dime Using Patron Centered Design

Linwood A

Mary Lopez, Jennifer Webb, Library Services Manager - Washington Park branch, Milwaukee Public Library; **Liz Humphrey**, Milwaukee Public Library

Learn how two branches of the Milwaukee Public Library transformed their library space with nearly no budget. Learn how the speakers got the idea and received support from administration and now have library space that works better for staff and patrons. Participants will learn what Patron Centered Design is and how it can help you create dynamic and engaging library spaces, no matter what size your library or budget.

Strong & Energized Boards

Maple Lawn B

Rachel Arndt, Consultant, Principal Rachel Arndt Consulting

Library boards and friends groups play important roles in guiding decision-making, providing fundraising and community support, and ensuring the long-term strength of their libraries. With the right volunteers, a successful board or friend group will have a passion for the library's mission, will provide resources to build capacity, and will be an ambassador for the library in the community. In this session, learn how to engage and energize board members, develop relationships between the board and the library, and succession plan for the future of the board.

Gathering and Sharing Stories with StoryCorps: A Partnership Model

Loramoor B

Angela Meyers, Coordinator of Youth and Inclusive Services; Bridges Library System; **Kelly Davis**, Librarian; Waukesha Public Library

Two microphones. Two people. One incredible conversation. In 2021, the Bridges Library System received a grant to procure equipment and staff training from StoryCorps, a non-profit based in New York which has been collecting oral history stories for 20 years. The library system, with 11 librarians trained as facilitators, created the Gathering and Sharing Stories initiative to foster opportunities for lasting connection in their communities through oral history. In this session, you'll learn more about this partnership and how you can gather and share your communities' stories.

Creating a Digitization Space from Thin Air!

Swinghurst

Kent Barnard, Patterson Memorial Library

The presenter will describe the creation of 2 digital spaces and a "Zoom Spot" at the Patterson Memorial Library "Remember Me- Digital Preservation of Local Histories" and "The Memory Spot - Record Your History!" From writing the grants to purchasing equipment and furnishing a space that was stolen from the Reading Room, the Presenter will inform on choices made and the eventual posting of the information on the library website and training videos created for patrons and staff.

Digital Rooms and Digital Resources

Linwood B

Raquel Rand, Library Media Coordinator, Green Bay Area

In this session, the presenter will show how to create a digital space and room that can be shared out to attract the attention of the library users. At the moment, the world is very visual-heavy and how can libraries harness this to their advantage. The presenter comes from a school library background and will share how during the virtual time and on libraries have utilized digital rooms to give students access to programs.

Connecting Beyond the School Library

Loramoor C

Cindy Halter, Library Media Specialist, La Crosse Central High School; **Kristi Moulton**, Librarian, Logan High School; **Carrie Wuensch-Harden**; **Lisa Altreuter**, Teacher Librarian, La Crosse School District

Participants will learn how school librarians in the School District of La Crosse have developed partnerships with the La Crosse Public Library (LPL), the La Crosse Public Education Foundation (LPEF), and UW-La Crosse (UWL) that offer learning opportunities and celebrations for both students and librarians, as well as built a professional learning community with a cross section of professional librarians in the community. Participants will learn about the "Sneakers" and "Stars" programs at the LPL for elementary students, author visits supported through grants from the LPEF, and Battle of the Books competitions, and professional conferences offered in partnership with UWL.

11:30 AM - 1:00 PM

YSS Luncheon, Kevin Henkes – *Sponsored by Jennie J. Stoltz
Maple Lawn C*

Kevin Henkes, *Author*

Caldecott Medalist, Newbery Honoree, and #1 New York Times bestselling author and illustrator Kevin Henkes will discuss the different kinds of books he creates from picture books for the very young to storybooks for older children to books for those just beginning to read to novels for older readers. He will explain how they are different and how they are similar. His talk will include his thoughts about imagination, process, and the power of reading. Kevin Henkes has written and illustrated 61 books, including *Olive's Ocean*, *The Year of Billy Miller*, *Chrysanthemum*, and the beloved *Lilly's Purple Plastic Purse*, in a career that has spanned more than 40 years. In 2020, he was the recipient of the American Library Association's Children's Literature Legacy Award for his lasting contribution to literature for children.

Attendee Lunch

Exhibit Areas

Note: Those registered to attend the YSS Luncheon with Kevin Henkes will be in Maple Lawn B.

12:00 PM - 1:00 PM

AWSL Business Meeting

Williams Bay Boardroom

1:30 PM - 2:30 PM

Make It Accessible: Supporting Diverse Learning Communities Through Digital Collections

Swinghurst

Kendra Bouda, *Internet Scout Research Group, UW-Madison*

This session introduces the AccessATE resource library—a collection of resources intended to raise awareness of accessibility issues; increase understanding of accessibility tools, assistive technologies, and best practices; and support educators as they work to meet student needs. The presenter will discuss challenges in building the collection, with a particular focus on policy development, metadata, and the construction of a custom subject vocabulary. The speaker will also highlight technical considerations, collaborations, and lessons learned. Funded through the National Science Foundation's Advanced Technological Education program, AccessATE (<https://accessate.net>) is a project of the Internet

Scout Research Group at the University of Wisconsin-Madison.

WI Libraries Talk About Race: What's Next?

Linwood B

Sauna Koszegi, *Southwest Wisconsin Library System*; **Sherry Machones**, *Director, Northern Waters Library Service*; **Mark Jochem**, *South Central Library System*

This session will present the data and next steps of the LSTA funded WI Libraries Talk About Race project. In 2021, a team of system consultants from across Wisconsin convened and was named The IDEA (Inclusion, Diversity, and Equity in Action) Team, and their purpose is to facilitate and organize statewide professional learning on topics related to diversity, equity, and inclusion (DEI) for Wisconsin public library workers. What did the team learn? What does the next phase of the project look like?

A Collective Approach to Library and Community Resiliency

Loramoor B

Barbara Brattin, *Director, Kenosha Public Library*; **Nick Dimassis**, *Beloit Public Library*; **Melissa Prentice**, *Public Services Manager, Mead Public Library*; **Melissa McLimans**, *WiLS*
In 2021, eleven mid-size libraries formed the City Library Collective (CLC) to address common issues and use collective knowledge and experience to improve their organizations and services to their communities. The group was awarded an ARPA grant shortly after in order to collaboratively explore and promote ways to incorporate concepts, tools, and techniques from social work, including Whole Person Librarianship. Join members of the CLC as they share information about Whole Person Librarianship, library resiliency, and accomplishing big ideas through a collective approach.

Homeless Care Kits - Making a Difference in Our Community

Loramoor C

Jennifer Bynum, **Michelle Dennis**, *Head of Public Services, Hedberg Public Library*

The presenters will share how Hedberg Public Library, located in Janesville, Wisconsin, noticed an increasing population of unhoused patrons. This is partially because more are in need and partially because the local municipality opened the lot adjacent to the library for overnight parking for homeless individuals. Quite a few people are now living there in their cars. Especially on frigid

winter days and in the heat of the summer, the presenters and other staff members were asked for help they couldn't give. During the COVID closures it was heartbreaking for staff to have to send people somewhere else when those locations may not be accessible for several days, or outside of a limited window of time. These patrons needed Hedberg's help! Hedberg staff wanted to provide them with food and other items that would make daily lives easier. Approval was obtained from Hedberg's leadership to create Homeless Care Kits. Donations were solicited from family, friends and coworkers, partnered with ECHO, a local agency that coordinates resources from many sources, and other outside agencies. Staff have found a concrete difference is being made in the lives of many of Janesville's community members. During this session, the presenters would like to share how the service was created, how they found and recruited partners, and how the resources are being managed. They will also talk about some wrinkles they have encountered and how they are handling things like repeat requests and criticism from the community.

Telling our Family Stories: Historical Government and Legal Resources for Genealogy Research

Loramoor A

Eileen Snyder, Wisconsin State Government Publications Librarian, Wisconsin Historical Society; **Lori Bessler**, Reference Librarian Wisconsin Historical Society; **Abbie Norderhaug**, State Archivist & Director of Acquisitions, Wisconsin Historical Society

We can never fully know why our ancestors made certain choices but understanding the legal environment they lived in can help us tell a more complete story of their lives. In this panel presentation, 3 Wisconsin Historical Society staff members will provide an overview of government resources that can help answer some common genealogy questions such as: What were the marriage laws in the 1800s? What can I learn from citizen petitions to the state? What were the borders of my hometown in 1849? This panel will help you forge a more complete understanding of how your ancestors lived.

The Eviction Crisis: Resources on Landlord/Tenant Law and How to Use Them

Maple Lawn B

Elizabeth Manriquez, Head of Reference and Scholarly Support, University of Wisconsin School of Law Library

During this program the speaker, a law librarian, will review resources available for patrons in Wisconsin facing eviction, foreclosure, and other housing issues. She will give a brief overview of how to use these resources and give examples of how to respond to real patron questions.

Bored? Not When You Have Board Games!

Linwood A

Amy Greatens, Library Service Associate, Brown County Library; **Katie Boettcher**, Research Librarian Brown County Library

Learn how Brown County Library brought gaming from the library into the home with circulating board games, role playing games (RPGs), and puzzles. Presenters will share information about their partnership with a local game store and creative suggestions for funding games collections. They will also discuss circulation, including how games are prepared to go out and what happens upon return. Discover how the collections are used for programming, plus how one branch uses volunteers to maintain their puzzles. Presenters will answer your questions and give practical advice on how you can make it work for your library – big or small!

2:30 PM – 3:00 PM

Refreshments Break - Sponsored by
LibraryReads
Exhibit Areas

3:00 PM - 4:00 PM

Reviewing the Academic Library
Swinghurst

Paula Ganyard, UW-Green Bay Library

In this session, you will learn how UW-Green Bay created a process to complete a self-evaluation using the ACRL Standards for Libraries in Higher Education. The presenter will share their process and outcome, as well as tips if you are interested in doing this yourself. While this process was for an academic library, the tips are applicable for any library self-evaluation.

The Collection Audit: Cleaning...Not Cleansing

Linwood B

Michael DeVries, Head of Library Resources, Beloit Public Library; **Nick Dimassis**, Beloit Public Library; **Allison Suzanne Moerer**

Auditing collections for a variety of diversities is not new, but whereas in the past it focused on assessing the library as a "balanced collection" across topics, the current trend focuses on assessing diversity within the pages of a book. Sci-Fi/Fantasy has long wrestled with social

issues as the genre provides a certain objectivity or distancing and auditing this collection can yield data against which to assess other genres. Learn how one library conducted its own audit. But no less important, amid external censorship efforts, is ensuring that staff do not fall prey to internal censorship.

Yes, You Can: Library Legislative Day Tips and Tricks

Maple Lawn B

Dr. Steven Conway, *Conway Consulting*; **Kris Adams Wendt**, *Public Library Consultant (semi-retired), Wisconsin Valley Library Service*; **Kathy Pletcher**, *Trustee - NFLS & Brown County Library*

Library Legislative Day can seem daunting, but it doesn't have to be. This program will feature Legislative Day veterans who will provide hints, tips, and "what-to-watch for's" when you visit your legislators. You'll watch mock legislative visits and get ideas on how to advocate for your library and libraries across the state. Learn what to say, how to say it, and how to answer even the most difficult legislator questions. Legislators love libraries, and you can educate them to love them even more.

Spilling the T(ruth) on Management - Lessons Learned from Public & Academic Librarians

Loramoor B

Tammy Mays, *Ph.D., Public Services Area Manager-Branches, Milwaukee Public Library*; **Stephanie Harris**, *UW-Madison/WTS*; **Hermoine Bell-Henderson**, *Coordinator of Business, Technology, and Periodicals, Milwaukee Public Library*

In this interactive session, Dr. Tammy Mays, Stephanie M. Harris, and Hermoine Bell-Henderson will share management lessons learned over their journey through various management levels in public and academic libraries. The presenters will discuss general management strategies through the lens of Emotional Intelligence. They will also discuss managing staff on the frontlines, managing through change, managing former colleagues, and co-managing a team and operations while overcoming imposter syndrome.

Beyond the Gaming Table - Engaging Patrons through Storytelling RPGs

Linwood A

Amy Welch, *Waukesha Public Library*; **Olivia Langby**; **Caitlin Schaffer** (*she, her*), *Youth Services Librarian, Oconomowoc Public Library*

Storytelling is a major part of tabletop games like Dungeons and Dragons, but stories that are one-sided are boring! Presenters explore the concept of collaborative storytelling through the use of roleplaying and how it can be used as a tool to engage and connect with patrons of all ages, encourage conversations and advocacy, and further your library's presence in the community.

Getting in the Subscription Game: How You Can Create a Book Subscription for Kids

Loramoor C

Katrina Wulff, *Youth Services Manager, Neenah Public Library*; **Jodi Leslie**, *Neenah Public Library*

Learn how to create your own book subscription service for any age using library books and increase your circulation exponentially. The service highlights books that normally get passed over, exposes patrons to genres outside their comfort zones, creates an easy way to handout librarian recommended books, and kids get a snack to go with it!

Compassion Resilience Toolkit Training

Loramoor A

Ann Homstad

The Compassion Resilience Toolkit is a program offered through WISE (Wise Initiative for Stigma Elimination) and facilitated through Rogers Behavioral Health. The Toolkit, presented by Ann Homstad, with Rogers Community Learning and Engagement & WISE, offers information, activities, and resources for leadership and staff to understand, recognize, and minimize the experience of compassion fatigue and to increase compassion resilience. The Rogers Behavioral Health Compassion Resilience Tool Kit Training began as a DPI initiative and is currently implemented in various degrees and formats across public libraries.

4:30 PM - 5:30 PM

Building for One, Designing for Many: How One Organization Developed an Inclusive Design Framework

Maple Lawn B

Rebecca Rosenstiel, *WiLS*; **Laura Damon-Moore**, *Library Strategist & Consultant, WiLS*

Many libraries and organizations are taking more conscious and deliberate actions toward becoming more inclusive, but it can be easy to overlook some aspects of inclusivity. In 2021, WiLS implemented a go-to collection of definitions, consideration points, and resources to be used by WiLS staff to help ensure end-users

have equitable experiences. Join Laura Damon-Moore and Rebecca Rosenstiel as they walk through how they and their WiLS colleagues developed an Inclusive Design Framework. Attendees of this session will leave with ideas for methods and actions they can use to create an Inclusive Design Framework for, and with, their own institutions.

Dressing for Maximum Performance

Loramoor C

Jamie Matczak, Education Consultant, Wisconsin Valley Library Service; **Elizabeth Timmins**, Library Director & Programmer, Muehl Public Library; **Karol Kennedy**, Director, Bridges Library System; **Abby Armour**, Library Director, Mukwonago Community Library

The Journal of Experimental Social Psychology states that "enclothed cognition" is the idea that our clothes alter our moods, affect our focus and concentration, and impact our mental health. What should a library "uniform" look like in 2022 and beyond? How do we affordably dress for our role while also staying true to our personalities? How do we make the shift from doing Zoom calls in our pajamas the last two years to now appearing in front of our stakeholders? Join four librarians representing different decades for this fun and informational session.

Leadership Talks: Lessons from WLA Members

Linwood B

Rachel Arndt, Consultant, Principal, Rachel Arndt Consulting

Membership in Wisconsin Library Association (WLA) can be made all the more valuable through involvement in the divisions, sections, special interest groups and committees of WLA. In this panel presentation, active members of WLA will share their experiences and provide guidance for emerging leaders who are interested in becoming involved with the association. Panelists will share stories about their professional development through WLA volunteer work. Information on available volunteer opportunities will be provided. Audience members will be invited to engage with the panelists throughout the presentation and during a question-and-answer session.

Día de los Muertos: Co-Hosting a Day of the Dead Celebration

Linwood A

Trina Erickson, Library Director, McIntosh Memorial Library; **Laci Sheldon**, Youth Services Director, McIntosh Memorial Library

Día de los Muertos/ Day of the Dead is an autumn holiday of mourning that originated in Mexico and is now celebrated around the world. Staff from the McIntosh Memorial Library in Viroqua will discuss how they partner with local and statewide organizations to cohost an annual Día de los Muertos: A Mexican Cultural and Educational Event. Gain valuable insight on the importance of the event in relation to collaborative programming offered by the library.

Ask a Data Analyst (Almost) Anything!

Swinghurst

Kim Cochran Kieseewetter, WiLS; **Melissa McLimans**, WiLS

Have questions about how to find or use data at your library but aren't sure where to find the answer? Have you ever wished you had a data analyst to ask about current best practices? Now's your chance! Join WiLS consultants Kim Kieseewetter and Melissa McLimans for a session built around your data-related questions. Kim works as a Data Analyst on a variety of consulting projects for libraries, and Melissa has extensive library experience, including managing dozens of strategic planning processes for a variety of libraries. The session will be designed as a first-come first-serve open question forum.

Exploring Connections for Wisconsin Libraries

Loramoor B

Monica Treptow, School Library Education Consultant Wisconsin Department of Public Instruction; **Laurie Ollhoff**, T. B. Scott Free Library; **Raquel Rand**, Library Media Coordinator, Green Bay Area; **Amanda Struckmeyer**

In May 2018, a small group representing different libraries and varying roles came together to form Connecting Wisconsin Libraries, a group with a purpose of fostering collaboration, providing information, and sharing practice ideas between school and public libraries on a statewide level. Through the last four years we have experienced inspiration, success, and pandemic survival. Find out what this group has done and where it could go. Contribute ideas for its future at this interactive discussion session featuring a panel of group members and a hunger for your feedback!

6:00 PM - 8:00 PM Dungeons and Dragons Tabletop Role-Playing Game

Grand Ballroom Foyer

Have you ever been curious about Dungeons and Dragons but didn't know where to start? Get

acquainted with the help of library colleagues with this fun and fascinating tool for collaborative storytelling and engagement. Register or drop in and see what all the buzz is about! Free and open to participants at all levels.

6:30 PM - 8:00 PM

UW Madison Alumni Meeting

Maple Lawn C

UW Milwaukee Alumni Meeting

Maple Lawn B

8:00 PM - 11:00 PM

WLA Foundation Trivia Night Fundraiser

Evergreen Ballroom

\$25.00 (\$30.00 at the door)

Join us for the WLA Foundation Fundraiser Trivia Contest hosted by WLA Vice President Kris Turner. Here's your chance to show off your knowledge and enjoy a fun evening of random and obscure facts! Come as a team or play by yourself and compete for fun prizes. Light snacks, plus a charitable contribution to the Foundation! Snacks available.

The Evergreen Room (includes sections 1 and 2) is on the second floor. Elevator access near Registration Table area.

Thursday

7:00 AM - 4:00 PM

Registration

Grand Ballroom Foyer

Exhibit Hall Open

7:00 AM - 3:30 PM

WLA Foundation Silent Auction

Exhibit Hall in the Grand Ballroom

Support the WLA Foundation and bid on fun, creative items! The auction closes Thursday at 3:30 p.m. Pick up and pay from 3:30 p.m. - 4:30 p.m. Payment options include cash, check or credit card. The popular *Buy It Now* option will be available!

7:00 AM - 8:00 AM

YSS Board Meeting and Breakfast

Williams Bay Boardroom

Attendee Breakfast

Exhibit Areas

7:45 AM

Trolley Pickup for Keynote

Main Entrance

8:00 AM - 9:00 AM

Keynote: Alison Macrina, Library Freedom Project

Intellectual Freedom and Social Justice: Library Values in Conflict - *Sponsored in part by Arrowhead Library Services The Forum*

In the last few years, libraries have become a front in the hyperpartisan culture war. Book challenges have increased by an order of magnitude, drag queen storytimes result in angry protests, and "free speech auditors" harass library workers, demanding to see copies of the latest reactionary and deceptive bestseller. As librarians, we value intellectual freedom, the freedom to read without fear of censorship or reprisal; we also value social responsibility, equity, diversity, and inclusion. We want our libraries to be welcoming to marginalized people, lifting up their voices and stories. We know that in order to do justice to these communities, we must not tolerate intolerance. But in our current political climate, these values are in conflict. What is to be done? How do we promote intellectual freedom while also standing up for social justice? How do we communicate our values to our communities? Does "neutrality" mean we can't take a position on these things? Alison Macrina, director of Library Freedom Project, will discuss these issues and how library workers can apply a social justice lens to intellectual freedom in our collections and services.

9:00 AM - 9:30 AM

2022 WLA and WLA Foundation Annual Membership Meeting

The Forum

10:00 AM - 11:00 AM

Building Diverse Collections with TeachingBooks & Book Connections

Linwood B

Mary Ellen Graf; Susannah Gilbert,
Implementation & Training Specialist,
TeachingBooks

Create collections that best serve your communities with TeachingBooks and Book Connections are provided to all Wisconsin schools, public libraries, universities and residents through BadgerLink, a service of the Wisconsin Department of Public Instruction. Join the presenters to learn how to use the Collection

Analysis Toolkit to generate reports that provide insights into the genre, cultural, and curricular classifications represented in your booklists and collections. Leave this session with strategies for identifying award-winning diverse books to augment your collections and promoting those books to your communities.

Holding Library Vendors Accountable to Privacy and Information Equity Values

Maple Lawn B

Alison Macrina, *Library Freedom Project*

Libraries work hard to stay committed to our values of privacy, access, and equity. But unfortunately, our vendors don't always share these same commitments. Some make dangerous decisions with patron data, sharing it with 3rd parties or even with federal law enforcement like ICE. Others platform disinformation about COVID vaccines and gay conversion therapy. The trend of big vendors increasing their portfolio of mergers and acquisitions means bigger, more powerful, even less accountable companies, collecting enormous datasets, adding more and more shady analytics products and tools, and effectively building highly sophisticated surveillance systems. There are increasing efforts at resistance to these vendors, but we need more leadership, bigger collective efforts, and more radical demands. Alison Macrina, director of Library Freedom Project, will talk about some of the major issues with vendors in conflict with library values, and share about efforts toward reforming and accountability, and what comes next.

The WLA Mentorship Program: Partnership and Perspective

Loramoor B

Jennifer Bernetzke, *ILS/ILL Consultant, Southwest WI Library System (SWLS)*

Librarians rise to the challenges they face in an evolving profession on a daily basis. The WLA Mentorship program pairs mentors and mentees from across the state and in all branches of librarianship. The program is free for WLA members and is designed to provide encouragement, support, and guidance to library staff seeking professional growth through connections with experienced colleagues within a structured mentoring program. The panelists will discuss their experiences being part of the WLA Mentorship program.

You are a Manager Now, Wait, What?

Loramoor A

Denise Chojnacki, *Rhineland District Library*; **Ann Cooksey**, *Appleton Public Library*

Children's Librarians Ann Cooksey of Appleton Public Library and Denise Chojnacki of Rhineland District Library met in 2015 at a training offered by the Wisconsin Department of Public Instruction. Over the years, despite different backgrounds and different library systems, they found themselves following a similar career track. They will share their journeys into management, how they navigated the beginning of the pandemic as new supervisors and what they are learning now to Rise to the Challenge. This session is designed for new supervisors and/or those considering management opportunities

Access to Justice and the Public Library

Loramoor C

Jeff Brown, *Staff Coordinator, Wisconsin Access to Justice Commission*; **Mary Ferwerda**,

Executive Director Milwaukee Justice Center;

Carol Hassler, *Access Services Librarian,*

Wisconsin State Law Library; **Elizabeth**

Manriquez, *Head of Reference and Scholarly*

Support, University of Wisconsin School of Law Library

Libraries are trusted sources of information and help close the justice gap through legal reference services, referrals, and access to technology.

Learn how libraries can help improve civil access to justice in Wisconsin. Libraries can identify civil legal issues and help patrons with information about the law, and local or statewide resources.

Get an overview of legal aid initiatives and understand how to connect your patrons with organizations serving your community. Panelists include Jeff Brown (State Bar of Wisconsin), Mary Ferwerda (Milwaukee Justice Center), Carol Hassler (Wisconsin State Law Library), and Elizabeth Manriquez (UW Law Library).

Ready to Learn with PBS Kids

Maple Lawn A

Kim Huber, *Head of Library Services, Beloit*

Public Library; **Mouna Algahaihi**, *Early Learning*

Engagement Specialist, PBS Wisconsin; **Desiree**

Johnson, *Library Services Specialist, Beloit Public Library*

Join us as we share PBS Kids Ready to Learn resources. Learn how to use these fun (and educational!) activities in your youth programming. Two programs developed at the Beloit Public Library will be highlighted with tips

on how to replicate these programs. When I Grow Up is a series where children are invited to learn about the exciting world of work through hands-on learning. Play and Learn Science is a series where participating families are introduced to activities to help activate science inquiry through hands-on exploration. Both series of programs are a collaborative effort among the library, PBS Kids and community partners.

10:00 AM - 11:00 AM

Foundation Board of Directors Business Meeting

Williams Bay Boardroom

10:00 AM - 3:00 PM

Career Center: Resume Review & Interview Tips

Buttons Bay Boardroom

Sign up in advance for an appointment for [Resume Review](#) or [Interview Tips](#).

11:30 AM - 1:00 PM

Luncheon, Barbara Lawton: Rising to the Challenge: Designing Your Future, Personal and Professional, One Decision and One Step at a Time

Maple Lawn C

Barbara Lawton, Wisconsin Lieutenant Governor (2003-2011)

Start with lessons in literacy in power, taking a look at historical drivers and scanning the contemporary landscape, to learn how to better navigate those power dynamics that define your life in an inevitably play-by-play game. See how decisions you make, small and large, shape your personal and professional future, as well as that of the institutions you serve. And recognize all the tools in your quiver to make the work environment work for you.

Attendee Lunch

Exhibit Areas

(Those registered to attend the Luncheon with Barbara Lawton will be in Maple Lawn C.)

12:00 PM - 3:00 PM

Career Center Professional Headshots

Sign up here for a 5-minute appointment with professional photographer Chris Ogden: <https://bit.ly/3gyV1aw>. Photos will be emailed directly to you!

1:30 PM - 2:30 PM

Feasibility Study - From Beginning to Completion

Linwood B

Michelle Carter, Director, Aram Public Library;

Julie Cotter

Feasibility studies can assist a board and director moving towards possible building or renovation projects by laying the groundwork for forthcoming fundraising while being mindful of future directions. A feasibility study can aid in establishing potential building size, location and establishing a total project cost. Participants will learn the time frame, process and outcomes of a study and the takeaways for a future capital campaign such as the creation of a donor database, community and staff engagement, and advocacy for the project.

Out of Sight, Out of Mind: The Hidden History of Racism in American Librarianship

Sponsored by Southwest Library System

Maple Lawn B

Wayne Wiegand, Florida State University

The presenter will offer an oral and visual tour through the history of racism in the professional practice of American librarianship that focuses on particular incidents and people largely unknown to contemporary generations of professionals. Sparked largely by reaction to the controversy over critical race theory, on August 18, 2021, the American Library Association Executive Board issued a statement that concludes with this sentence: "For more than 140 years, ALA has been the trusted voice of libraries, advocating for the profession and the library's role in enhancing learning and ensuring access to information for all." This statement is simply not true. Learning about the hidden history of racism in librarianship will stimulate reflection on how this history informs our present-day conversations on diversity, equity, and inclusion within Wisconsin libraries.

Planning and Executing a Capital Campaign

Linwood A

Emily Kornak, Library Director, Lake Geneva Public Library; **Jodi B. Sweeney**, President, The Sweeney Group

The Lake Geneva Public Library and The Sweeney Group conducted a six-month mini capital campaign from March-September 2021 to partially finance a building renovation. Hear about the campaign and Sweeney Group's strategy and coordination with the library staff and volunteers. The library's capital campaign included the 100 Extraordinary Women initiative as well as major gifts that resulted in over \$800,000 raised (campaign goal was \$500,000). Take away tips and tricks for successful capital campaign

planning and execution, whether for a building project, funding an endowment, or building library reserves.

DPI's Library Services Team: State of the State Library Agency

Loramoor C

Ben Miller, *Department of Public Instruction*

This program will detail the work being done by the Library Services Team to empower Wisconsin libraries to best serve their communities. Hear about ongoing work being done for libraries of all types as well as updates on statewide projects and initiatives.

The Time Tax and Library Patrons: Easing the Stress

Maple Lawn A

Brett Rohlwing, *Library Branch Manager, Martin Luther King Library, Milwaukee Public Library*

Many of our patrons, especially those at the lowest economic levels, struggle with what Atlantic writer Annie Lowrey calls the Time Tax: the ever-increasing amount of time people must spend contending with complex, confusing and arbitrary paperwork and other actions to get work or receive the merest of benefits from the social safety net. This presentation will discuss the full array of what our patrons must contend with and how we as librarians can help ease their burdens.

The Librarians Are Not Okay: Emotional Intelligence at Work

Loramoor B

Monica LaVold, *Library Director, New Richmond Public Library*; **Katherine Elchert**, *McMillan Memorial Library*

The presenters will introduce the basics of emotional intelligence as well as explore ways to address the mental and emotion strain that we face in our jobs. They will explore some of the factor contributing to stress and unhappiness at work and consider practical ways to increase our own emotional intelligence as well as understand the emotional intelligence of those around us.

Community Networking: Small Library Big Impact!

Loramoor A

Trina Erickson, *Library Director, McIntosh Memorial Library*; **Laci Sheldon**, *Youth Services Director McIntosh Memorial Library*

Is your library deeply connected within the community it serves? Who are your library advocates? Learn how the McIntosh Memorial Library in Viroqua went through a significant

transformation to become a cornerstone resource for the greater Viroqua area. Library Director Trina Erickson and Youth Services Director Laci Sheldon will talk about the multi-year commitment the staff and board made to rebrand the library image. During the presentation Erickson and Sheldon will share stories, tips, and timelines on how to elevate the image and usage of your public library.

1:30 PM

Shuttle pick up for the Tour of the Wisconsin School for the Deaf Library and Museum

Main Entrance

The School is a 30-minute drive from the Grand Geneva and attendees are encouraged to carpool. Depart from the Grand Geneva at 2:00 p.m. and return by 4:00 p.m. Maximum 40.

2:00 PM - 4:00 PM

Tour of the Wisconsin School for the Deaf Library and Museum

Sponsored by the WLA Association of Special Librarians (AWSL) Division

309 W. Walworth Ave, Delavan, WI

Fleming for a tour of the Wisconsin School for the Deaf (WSD) Library and Museum. The Wisconsin School for the Deaf (WSD) is the only residential school for deaf and hard of hearing students (ages 3- 21) in the state of Wisconsin. The Wisconsin School for the Deaf is a resource for the entire state of Wisconsin and has been in continuous operation since its founding, and has operated since 1939 as a bureau of the state Department of Public Instruction. The museum at WSD preserves WSD's history through the many artifacts and photographs that are on display.

2:30 PM – 3:00 PM

Refreshments Break – Sponsored by LibraryReads

Exhibit Areas

3:00 PM - 4:00 PM

Finding the Fundraiser in You and Your Community

Loramoor B

Michelle Carter, *Director, Aram Public Library*; **Ashlee Kunkel**, *Library Director/Teen Librarian, Milton Public Library*

"Fundraising is the gentle art of teaching others the joy of giving."- Hank Rosso

Fundraising is a key element in a library's financial short and long-term plan. Developing a grass roots approach, taking initiative, and implementing smaller, successful fundraisers

leads to a strong funding future. Smaller, proven fundraising examples will be shared including a Library Store, Food Truck Rally, and women's donor initiatives. With humor and practicality, speakers will share their own experiences seeking donations and building consistent donor relationships. From concept through implementation, speakers will include identifying characteristics of a successful fundraiser and how to identify this (hidden) talent in yourself and others.

The One-Person Marketing Team

Linwood B

Ashley Colstad, *Public Information Coordinator, Milton Public Library*

Learn how to make a big impact through marketing with a team as small as just one person! Ashley, from Milton Public Library, will share how she manages social media, in-house marketing, and how she is growing the influence of the library online, all while still finding time to help with programming and customer service! Maximize your marketing time with some tips and tricks to help you connect with your patrons today.

At The Movies with Librarians: The Challenge of The Book

Loramoor C

Sherry Machones, *Director, Northern Waters Library Service*; **Angie Bodzislav**, *Director, Spooner Memorial Library*; **Kent Barnard**, *Patterson Memorial Library*; **Kim Dearth**, *Library Director, Wonewoc Public Library*; **Rachel Arndt**, *Consultant, Principal, Rachel Arndt Consulting*; **Brett Rohlwing**, *Library Branch Manager, Martin Luther King Library, Milwaukee Public Library*; **Erin Foley**, *Director, Adams County Library*
Back by popular demand! The panel will be discussing books being made into movies slated for release in late 2022 and early 2023. After enjoying exciting trailers, panelists will analyze **how well (or poorly) these books may translate to the screen.**

Livestream Your Programs with Streamyard

Linwood A

Kim Kiiskinen, *Reference and Technology Librarian, River Falls Public Library*; **Monica LaVold**, *Library Director, New Richmond Public Library*

Streamyard is the Canva of streaming. Learn how to use Streamyard to stream your programs to your Facebook Live, YouTube channel, or other platform, using in-person, virtual only, or hybrid

configurations. The presenters will show you what equipment you'll need and how to produce impressive streaming programs. This will be a hands-on session with opportunities to try it yourself!

Access for All: Maximize Your Reach with OverDrive

Loramoor A

Meghan Volchko, *Digital Content Librarian, Ill, OverDrive*

Learn how together we can help you identify and prioritize underserved audiences. Discover how new lending models, content and digital solutions will increase your reach and lower costs. Also, join us to see how you can drive engagement with library-customized communication tools.

Getting Your Board on Board - Policy Development with Your Board

Maple Lawn B

Tracy Vreeke, *Director, Nicolet Federated Library System*; **Hannah Good Zima**, *Office Manager, Nicolet Federated Library System*; **Kristie Hauer**, *Library Director, Shawano County Library*

This workshop will discuss the importance of engaging the Library Board in developing policies that will guide the management of library operations on a day-to-day basis. Getting buy-in from the Library Board ensures that the Board will support the library director when library policies are enforced, especially with challenging situations. The presenters, Tracy Vreeke and Hannah Good Zima of Nicolet Federated Library System and Kristie Hauer of Shawano County Library, will provide a checklist for library directors which will outline the steps involved in identifying, drafting and adopting new policies. Sample policy templates for library directors will also be shared and discussed.

The Time is Now: Welcoming and Affirming Queer Teens at Your Library

Maple Lawn A

Caitlin Schaffer, *Youth Services Librarian Oconomowoc Public Library*; **Abby Seymour**, *Teen Librarian, E.D. Locke Public Library*

The evidence is clear: LGBTQIA+ teens are at a much higher risk than their peers for being bullied, poor mental health, and suicide. So how do libraries help this historically underserved population? What can we do to make our libraries a safe, welcoming, and affirming space for queer teens? This session will not only cover the "why" of it all, but also the "how": How we are perfectly situated to provide critical services to queer

teens, whatever your community's political affiliation. Both presenters will cover what they do at their own libraries, one in a "blue" county and one in "red," and will also share what they learned through participating in valuable safe space and ally trainings.

4:30 PM - 5:30 PM

A New Pathway to Librarianship: Student & Graduate Perspectives

Linwood A

Nicole Breed, *Library and Information Services Instructor*; **Jennifer Cook**, *Library Science Instructor and Librarian, Chippewa Valley Technical College*

Chippewa Valley Technical College began offering its Library & Information Services Associate Degree in 2018. Since then, the program has had over 30 graduates. These alumni have found success in public, school, and academic libraries around Wisconsin - and even throughout the country. Learn more about the program from one of its instructors, who will highlight how the program removes barriers and meets unique needs while maintaining excellence. Then, hear from a panel of current students and graduates as they share how this degree has shaped their professional expertise and identity.

Passports Please! How 52 Libraries Increased Engagement by Working Together

Loramoor A

Rebecca Kilde, *IFLS Library System*; **Laura Turpin**, *Youth Services Coordinator, St. Croix Falls Public Library*

As the pandemic started to subside librarians noticed that people still hesitated to visit in person. The MORE consortium of IFLS libraries collaborated on the Explore MORE Passport Program to encourage people to visit MORE libraries and their communities, increase patron awareness of the benefits of a MORE library card, promote the new MORE app and cultivate partnerships between libraries and local businesses. The program was implemented in a way that didn't create a burden to already busy libraries and was scalable and customizable. The IFLS Marketing Committee will share the details of the first year of this collaborative marketing program and invite others to freely adopt and adjust for their library system.

Navigating Legal Reference Questions

Loramoor C

Carol Hassler, *Access Services Librarian Wisconsin State Law Library*

Librarians can be at the front lines of the legal system. Helping users to access legal information and resources can be complicated. Where is the line between research help and giving legal advice? How can you determine which sources are authoritative or up to date? This session gives examples and practical tips, including phrases you can use to manage your users' expectations. Discover online sources for case law, statutes, and regulations, and understand how the Wisconsin State Law Library's website and services can be used to optimize your legal reference services.

Everybody Dies, So Why Don't We Talk About It? Helping a Grieving Colleague

Linwood B

Kati Morley, *UW-Eau Claire*

Research shows that grief affects the body and brain in many ways, from changes in memory, behavior, body function and immune system. Grief also takes different forms. Grief is an individualistic journey, yet we tend to judge others based on our personal experiences, rather than taking a wholistic, therapeutic approach. This presentation will explain how our brain, behaviors and emotions are all engaged during bereavement, and how to best help bereaved colleagues and customers. This presentation will demystify the concept and provide advice for working with a grieving employee/colleague, specific to the library setting.

Crash Course on Community Reads

Loramoor B

Isa Small, *Programming & Communications Services Manager, L.E. Phillips Memorial Public Library*; **Tom Carson**, *Library Director, W. J. Niederkorn Library*; **Chris Baker**, *Public Library Consultant, Library Services Team, Department of Public Instruction*

WLA's Outreach Services Roundtable is proud to host an expert panel featuring three librarians sharing their experience planning successful Community Reads programs. Learn about the dos and don'ts of planning and funding a Community Reads program at your library.

2022 Burr/Worzalla Winner: Pahua and the Soul Stealer

Maple Lawn B

Lori Lee, Author

Pahua Moua has a bit of a reputation for being a weirdo. A lonely eleven-year-old Hmong girl with the unique ability to see spirits, she spends her summer days babysitting her little brother and playing with her best friend, a cat spirit no one else can see. One day Pahua accidentally untethers an angry spirit from the haunted bridge in her neighborhood -- whoops. When her brother suddenly falls sick and can't be awoken, Pahua fears that the bridge spirit has stolen his soul. She returns to the scene of the crime with her aunt's old shaman tools, hoping to confront the spirit and demand her brother's return. Instead, she summons a demon. Thankfully, a warrior shaman with a bit of an attitude problem shows up at the last minute and saves her butt. With the help of this guide, Pahua will have to find her way through the spirit worlds and rescue her brother's soul before it's too late. Little does she know she'll have her own discoveries to make along the way...

Community Engagement with Beanstack: Connecting Your School and Library Through Beanstack's "Tandems" Feature

Maple Lawn A

Rebekah Garrety, Librarian-in-Residence and Client Success Manager, Beanstack

In this session, participants will learn about the Beanstack "Tandems" feature which allows them to connect their library's Beanstack with school Beanstacks throughout their community. We'll discuss the benefits of these partnerships, the work required to get it setup, and review some examples of Tandems in action across Wisconsin. We'll also discuss ongoing content and programming available through Beanstack as well as introduce new features and general product updates!

5:00 PM - 6:00 PM

Past Presidents Reception

Williams Bay Boardroom

6:00 PM Trolley Pickup for Awards & Honors Reception

6:00 PM - 6:00

Trolley Pickup for Awards & Honors Reception

Main Entrance

Trolley

6:30 PM - 8:30 PM

Awards & Honors Reception

Sponsored in part by EBSCO and the Wisconsin Public Library Foundation

The Chalet

\$10.00 per person

This event will give everyone the chance to congratulate and interact with award winners. There will be a formal presentation of awards during the reception. It's a chance to celebrate with the winners and raise a glass in their honor.

The Chalet is a beautiful ski chalet and is on Resort Grounds. Participants can take the resort trolley or drive to the Chalet.

Friday

7:00 AM

WAPL Business Meeting

Buttons Bay Boardroom

7:00 AM - 8:30 AM

Attendee Continental Breakfast

Chophouse & Evolve Lounge

8:00 AM - 12:00 PM

Registration

Buttons Bay Boardroom

8:30 AM - 9:30 AM

The BELL: A Better Way to Connect Users to Local Business and Entrepreneur Resources

Linwood B

Nick Dimassis, Beloit Public Library; Brian Morello; Susan Rowe, Program Coordinator, Beloit College

Academic or many, there is a gap between the small business owner or entrepreneur and the resources they need to get started or to grow. Traditionally, libraries have addressed this gap by creating a small business collection, often with a seed grant from the SBA. Too often, these resources sit unused and aging. The BELL (Business, Entrepreneurial, and Leadership Lab) addresses the task of connecting those in need of these types of resources to the actual sources themselves, both conceptually and physically. Beloit Public Library, with a grant from the DPI via the CLC (City Library Collective), worked with its local college entrepreneurial program (CELEB) to develop a tool kit that libraries in all communities can use to increase access and bolster economic development. The goal is to actively engage the relevant organizations in deep partnerships rather than passively displaying their, or our, resources.

Technical Services Section Think Tank Panel Discussion

Loramoor B

Jackee Johnson, ILS Administrator, Northern Waters Library Service; **Gina Rae**, ILS & Database Support Specialist, Northern Waters Library Service; **Kathy Setter**, MORE Project Manager, IFLS Library System

Could you use help with any of the following: Cataloging, database maintenance, processing, inclusive subjects, efficiency workflows? Join this panel for rapid fire processing hacks, tips and tricks, support group therapy and book repair witchcraft.

Healing Our Community: Short & Long-Term Support After a Tragedy

Loramoor A

Kelly Davis, Librarian, Waukesha Public Library; **Kerry Pinkner**

Libraries across the country serve communities who have experienced some level of trauma, whether it's a pandemic, natural disaster, or an act of violence that affects the community. Staff from the Waukesha Public Library will discuss their library's response to the Waukesha parade tragedy and provide strategies for other libraries to support their communities through proactive relationship-building, planning, and community listening.

Behind the Screen: Intro to Being a Dungeon Master

Loramoor C

Eric Robinson, Dwight Foster Public Library - Fort Atkinson; **Eric Huemmer**, Community Engagement Coordinator, Mukwonago Community Library

New to Dungeons and Dragons? Not sure how to run a tabletop game for new or experienced players? Curious how the other side of the Dungeon Masters screen looks? Presenters... will share tips and tricks to being a first time Dungeon Master for your library gamers!

BadgerLink For Library Staff

Linwood A

Jennifer Champoux, Department of Public Instruction; **Elizabeth Neuman**, Wisconsin Department of Public Instruction

Rise to the challenge with BadgerLink resources in your library! When faced with many choices (like the 60+ databases available for free, statewide in BadgerLink), it is easy to become overwhelmed -- but we've got you covered! The presenter will walk through the ins and outs of

what you need to know as library staff, so you can be prepared to get the word out about Wisconsin's extensive electronic resource collection, without spending another penny! Perfect for newbies and veterans alike, this session will have something for everyone.

Firsties: Connecting to Families in Your District Though First Graders

Maple Lawn A

Teresa Douglas, Children's and Adult Librarian, Pauline Haass Public Library

This presenter will tell how the Pauline Haass Public Library has teamed up with school librarians, as well as teachers, to do monthly outreach to first graders throughout the district through videos filmed at the library then shown to kids during school library time. This program consists of monthly videos and school outreaches, as well as rewarding kids for visiting the public library monthly. Through this program the public library aims to make contact with families who frequent the library as well as families who are new to the library and its services.

9:45 AM - 11:15 AM

Ready, Set, Challenge: Materials Challenge Readiness

Loramoor C

Tracie Miller, Public Library Administration Consultant, South Central Library System; **Karli Pederson**; **Melissa Prentice**, Public Services Manager, Mead Public Library; **Megan Schliesman**, CCBC / UW-Madison

Are you and others at your library prepared to respond to a materials challenge? Have you reviewed your policies and procedures? Thought about how to engage with an upset patron? What essential messaging and communication does a public attack, materials concern or challenge demand with both internal and external audiences? This session will provide participants with the opportunity to respond to a challenge scenario from patron complaint through the reconsideration process and provide resources for conducting a materials challenge stress test in their own institutions. It will also emphasize the need for ongoing education and advocacy.

The Art of the Midwest Nice Email

Loramoor A

Anna Zook, L.E. Phillips Memorial Public Library; **Paula Stanton**, L. E. Phillips Memorial Public Library

Are you an Otter? Paula, a Lion, and Anna, a Golden Retriever, will walk you through strategies for effective email communication in a post-pandemic workplace. Participants will take a five-minute personality quiz to discover their communication style based on their animal type. From there, presenters will provide examples, ideas, and even a practice activity to help attendees learn how to communicate and engage with their fellow animals. Learn how to be direct without isolating your co-workers or upsetting any of the Beavers in your group.

Overextended and Under-Resourced? Meet Metavus, a New Digital Collections Platform

Maple Lawn A

Kendra Bouda, Internet Scout Research Group, UW-Madison; **Corey Halpin**, Software Engineer, Internet Scout Research Group, UW - Madison
This hands-on workshop will introduce attendees to Metavus, a free, open-source digital collections platform designed to describe, manage, and share born-digital or digitized resources. Ideal for web content, documents, photographs, audio/video material, and more, Metavus offers unparalleled flexibility in metadata configuration and robust, built-in search capabilities. Join presenters for an overview of software functionality and set up your own sandbox. Bringing a laptop or tablet is encouraged but not required. Free online training and support will be available to attendees post-conference. Metavus (<https://metavus.net>) is developed by the Internet Scout Research Group at the University of Wisconsin—Madison.

10:00 AM - 11:00 AM

Comedy of Errors: Stage Directions for a Library's Shift to Online Learning

Linwood A

Haley Lott, Beloit College; **Kelly Leahy**, Student Success and Engagement Librarian, Beloit College

Join our cast of characters as we break the fourth wall to analyze the three acts of pandemic learning, sharing the strategies we used to facilitate partnerships between faculty, staff, and students during the pandemic and the resources that helped us become a leader for change on our campus.

Representation Matters: Storytime and Collection Diversity

Loramoor B

Lisa Pike, Manitowoc Public Library; **Lynn Christiansen**, Youth Associate Manitowoc Public

Library; **Julia Lee**, Academic Librarian, University of Wisconsin - Milwaukee at Washington County
While weeding their youth collection, Manitowoc Public Library staff became aware of a distinct lack of diversity in their picture book collection. Staff began taking webinars and actively seeking more diverse titles - but that wasn't enough! Looking to diversify storytime, MPL staff began a year-long audit. Come learn about their findings, the process, and the tools they used to increase representation in the library.

11:30 AM - 1:30 PM

Tour of the newly renovated Lake Geneva Public Library - Sponsored by FEH Design,

bottled water provided by Kwik Trip

918 W Main St, Lake Geneva, WI 53147

Box lunch from The Cheese Box included –free to conference attendees. Limited to 50 attendees, pre-registration is required.

11:30 AM - 12:30 PM

Keynote: Dasha Kelly Hamilton, A Line Meant: The Life of a Creative Change Agent -

*Sponsored in part by Nicolet Federated Library System, Winding Rivers Library System, Winding Rivers Library System, and IFLS Library System
Maple Lawn C*

Dasha Kelly Hamilton is a writer, performance artist, curator, and facilitator. Ultimately, she's a creative change agent, leveraging the creative process toward human and social wellness. Her nonprofit, Still Waters Collective, initiated literary arts programming for 20 years, creating platforms for thousands of voices to be honored and heard. The organization continues to partner on impact projects, including a creative leadership fellowship.

Dasha has written for national, regional and local magazines; produced three collections of poetry; recorded four spoken word CDs; published two novels and one collection of personal vignettes; has work included in several anthologies; and performed in the last season of HBO's Def Poetry Jam. Her stage production, Makin' Cake, is touring nationally.

Dasha served as an Arts Envoy for the U.S. Embassy to teach, perform and facilitate community building initiatives in Botswana and the island of Mauritius. She was also an artist in residence in Beirut and Toronto. Dasha has been an adjunct professor at Mount Mary University, Alverno College, Bryant & Stratton, the University of Wisconsin-Milwaukee and a recruiter and

mentor with University of Wisconsin's First Wave Scholars Program. She holds an MFA in Creative Writing from Antioch University, an MA in Marketing Communications from Roosevelt University and a BS in Public Relations from Illinois State University. Dasha is former Artist of the Year for the City of Milwaukee and the city's 11th Poet Laureate. She has been named a 2020

national Rubinger Fellow and 2021-22 Poet Laureate for the State of Wisconsin. In 2021 she earned a National Laureate Fellowship award with the Academy of American Poets. This year she will serve as the endowed Social Justice Chair for Milwaukee Area Technical College.

Thank you to all of our amazing speakers for their hard work in preparing for these sessions!

Proud supporter of WLA



*Serving the public libraries
of Milwaukee County
with resources and collaborations
that enhance and strengthen
our communities.*

**Brown Deer Public Library
Cudahy Family Library
Franklin Public Library
Greendale Public Library
Greenfield Public Library
Milwaukee Public Library
Hales Corner Public Library
North Shore Library**

**Oak Creek Public Library
Shorewood Public Library
South Milwaukee Library
St. Francis Public Library
Wauwatosa Public Library
West Allis Public Library
Whitefish Bay Public Library**

2022 WLA and WLA Foundation Annual Membership Meeting

Thursday, November 3, 9:00AM - 9:30AM

The Forum at the Grand Geneva Resort & Spa
(Immediately following the Thursday morning keynote presentation)

AGENDA

(subject to change)

I. President, Nyama Reed

- Welcome/Call to Order
- Approval of the 2022 Agenda & 2021 Membership Meeting Minutes
- Introduction of Incoming Executive Committee (Vice President/President Elect, Treasurer, and Secretary)
- New WLA Vision & Values Statement

II. Vice President/President Elect – Kris Turner

III. WLA Foundation Report, WLAF Board President, Steven Thiry

IV. ALA Report – ALA Councilor, Kristina Gómez

V. Financial Report – Treasurer, Rachel Arndt

VI. Executive Director, Laura Sauser

- 2023 Initiatives
- Recognition of WLA Life Members

VII. Prize Drawings

VIII. Resolutions

IX. Adjournment

Thank you to our conference committee for making this all possible!

Conference Committee Chair

Barry McKnight
La Crosse Public Library

Programming

Linda Jerome
La Crosse Public Library
Becky Philips
Brown County Library
Margaret Murphy
UW-Madison

Local Arrangements

Emily Kornak
Lake Geneva Public Library
Ellen Ward-Packard
Lake Geneva Public Library

Exhibits

Michelle Dennis
Hedberg Public Library

Exhibitor Liaison

Matthew Kopyar
Apple Books

Book Signing

David Kranz
Southwest Library System

Registration

Elizabeth Timmins
Muehl Public Library
Cindy Borgen
Muehl Public Library

Publicity

Anna Zook
LE Phillips Memorial Public Library
Heather Miller
La Crosse Public Library
Annie Bahringer
Ph.D Student
Nyama Reed
Whitefish Bay Public Library

Booklet

Desiree Bongers
Ripon Public Library

Tech

Wyatt Ditzler
Beloit Public Library

App

Nancy Bell
Oshkosh Public Library

WLA Event Coordinator

Cindy Foley, CMP

10/24/23 - 10/27/23

Save the Date: *WLA Conference 2023*



in "The Good Neighbor City"
Middleton, Wisconsin

Madison Marriott West Hotel
and Conference Center
Middleton, WI

More information to come...

2022 WLA End-of-Year Review

Mission: The Wisconsin Library Association engages, inspires and advocates for library workers and supporters to improve and promote library services for the people of Wisconsin.

KEY AREAS

ACHIEVEMENTS

Membership

- As of October 2022, there are 1,410 active WLA members, an approximate 7% increase since the same period last year. We hope funding and personal income will continue to improve for our members to bring our membership numbers back to pre-COVID levels in 2023.
- Instituted a \$25 per year dues charge for existing Life Members, which has generated nearly \$1,600 in additional dues revenue so far. The criteria for Life membership was expanded to allow more members to achieve this status, and members still in the workforce who have been WLA members for 25 years are now able to apply for Life member status.
- Offered a series of informal Leader-to-Leader Quarterly Chats to give volunteer leaders the opportunity to discuss issues and share best practices.
- The Reference & Adult Services Section was discontinued. The Technical Services Section, the Outreach Services Roundtable, and the Inclusive Services and Intellectual Freedom Interest Groups all saw an increase in membership and activity.

Events

- Returned to in-person Library Legislative Day and WAAL, WAPL, and SSCS conferences.
- WLA staff experimented with offering educational webinars and will continue to offer online programs in the future.
- Forged a partnership with UW-Madison Extension to survey both past graduates of the Leadership Development Institute and current members. Surveys have provided valuable feedback as we work to refresh the program to rollout in 2023.
- The WAAL unit began two new series: in-person “Library Showcase” events around the state and online chats about a range of topics.
- The AWSL unit offered a series of virtual Town Hall events to highlight members’ libraries and network with each other.
- The second year of the WLA mentorship program was a success, and recruitment has begun for the third cohort of mentors and mentees in 2023.
- Members of WAPL initiated and helped underwrite the pilot phase of the “Check Out Wisconsin State Parks at Your Library” program to make state park passes available to library cardholders.

Administration/ Financial Management

- Cindy Foley, CMP, was hired as an event planning contractor in March, Elizabeth “Lizzy” Bradley was hired as the Membership & Communications Coordinator in September.
- Investments underperformed for most of 2022. The Association was able to secure a federal COVID-19 Economic Injury Disaster Loan (EIDL) as a safety net while we await a recovery. .

Advocacy

- Mobilized WLA members, trustees, and other library advocates to thank their legislators for their support of libraries through the biennial State of Wisconsin budget. Continued the popular “Libraries Transform” poster project with photos of new legislators and their favorite books.
- Intellectual Freedom Special Interest Group was reinstated and continues to grow, offering WLA members opportunities to share information, advice, and best practices.
- WLA Board of Directors issued a public statement affirming the Association’s commitment to Intellectual Freedom and the Freedom to Read.

2022 WLAF End-of-Year Review

Mission: To support the role of Wisconsin libraries as essential institutions.

KEY AREAS	TASKS REQUIRED	CURRENT STATUS
Mission Advancement	Provided financial support for: <ul style="list-style-type: none"> • WLA Awards and Honors • Scholarships for library and continuing education • WLA Literary Awards • Elizabeth Burr/Worzalla Award • Wisconsin Library Heritage Center • Special projects 	Ongoing
Fundraising & Marketing	<ul style="list-style-type: none"> • Continued to send out appeal mailings. • Created a fundraising subcommittee of the WLA Foundation Board of Directors. • Ensure Foundation presence at WAAL, WAPL, and WLA conferences. • WLA Foundation Trivia Night event. 	<ul style="list-style-type: none"> • Have secured over \$9,000 in gifts this year from mailings and unsolicited gifts. • Subcommittee has planned and is hosting a Silent Auction at the WLA Conference. • Ongoing • Annual event is being offered at the WLA Conference.
Endowment	<ul style="list-style-type: none"> • Promote planned giving option. • Continue to explore fundraising opportunities, such as special events. 	<ul style="list-style-type: none"> • Ongoing • Ongoing
Board Recruitment	<ul style="list-style-type: none"> • Use outreach to secure board members from the community at large. • Use annual online "Call for Volunteers" to secure potential candidates from the membership. 	<ul style="list-style-type: none"> • Ongoing • Ongoing

Wisconsin Library Association Statement of Net Assets September 30, 2022

Net Assets	
Fund Balance	\$240,289.02
Increase to Net Assets	\$3,624.92
TOTAL Net Assets	\$243,913.94

Wisconsin Library Association Foundation, Inc. Statement of Net Assets September 30, 2022

Net Assets	
Fund Balance	\$369,086.22
Increase to Net Assets	\$-77,632.84
TOTAL Net Assets	\$295,432.26



Proud Sponsor of the Librarian of the Year Award

It's an honor to sponsor the 2022 Librarian of the Year Award at the Wisconsin Library Association Annual Conference.

And it's been an honor to serve as your trusted partner for 117 years. We look forward to continuing to support you with high-quality library supplies, user-centered learning spaces, innovative solutions, and outstanding service — all to meet the unique needs of your community.

View our latest offerings, ideas, and inspiration at **demco.com**

inspiration